



Energy Management Systems

*Presentation For
[Company Name Here]*



eSightenergy

Your End-to-End Energy Management Partner



Our Experience

Facilities Management



Public Sector



Property



Pharmaceutical



Brewing



Aerospace & Automotive



Aerospace and Automotive Case Study

- Airbus SE
- A world leader in aerospace manufacturing
- €63.7 billion revenue in 2018
- Selected as product of choice for all manufacturing sites globally



AIRBUS



Miller Coors Case Study



- Miller-Coors has improved its energy usage procedures and stewardship at all 14 of its brewing sites across the United States, Canada, Central Europe and United Kingdom
- 800 employees brew up to 10 million barrels of beer a year at Milwaukee site
- Average payback of 4 months
- 3 continents, 14 sites, 5,000 meters
- 193% ROI



Texas Tech Case Study

- Effecting a transition from reactive maintenance to persistent commissioning
- On the day the eSight Energy EMS was powered up in July 2015, it identified a \$220,000 yearly savings opportunity
- *Biology FY17*– pneumatic line disconnected from chilled water valve (\$313,628)
- Overall savings at \$2 million to date
- Integrated meters from 49 buildings with plans to expand to 200 buildings over the next several years





The Energy Management Platform

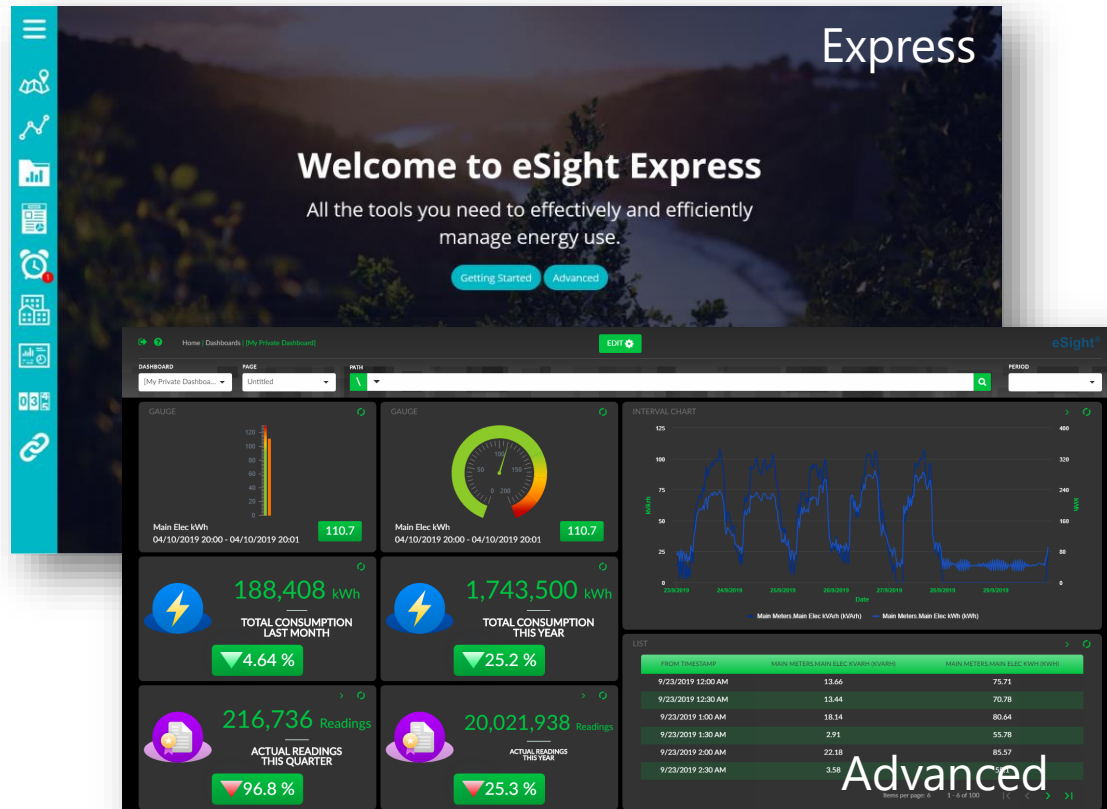


eSightenergy

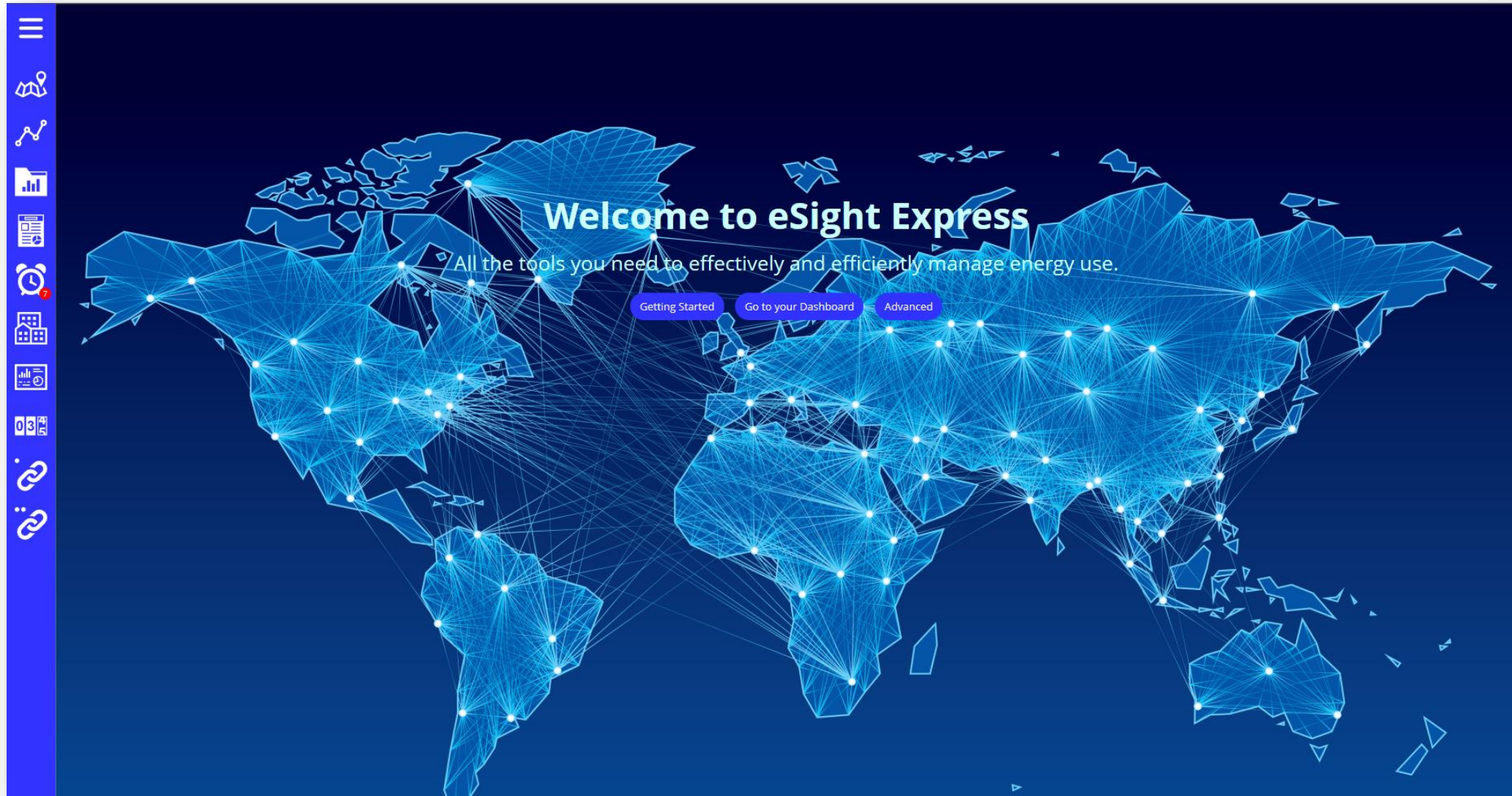
The Comprehensive Energy Management Suite

Express Dashboard

go green with
eSightENVI
The stunning interactive energy dashboard



Express Dashboard – Simple User-Friendly Interface



Creating a Custom Experience – Select the Modules You Want

9 Modules



Energy Analysis



Alarms



Automated Reporting



Calculated Meters



Utility Contracts – TOU



Data Import



Bill Verification



Project Tracking



Tenant Billing

Add-Ons



Dashboards



Excel Reporting



Weather Service



Map Navigation



Energy Analysis



eSightenergy

Energy Analysis Module

1. Energy Analysis
2. Rollup Reporting
3. Single Meter Analysis
4. Trend Line Analysis
5. Performance Analysis
6. Electricity Analysis
7. Baseload Analysis
8. KPI Ranking
9. Energy Temperature (ET) Analysis
10. Batch Processing
11. Data Export
12. Multi-Variable Linear Regression (MVLR) Models



Energy Analysis



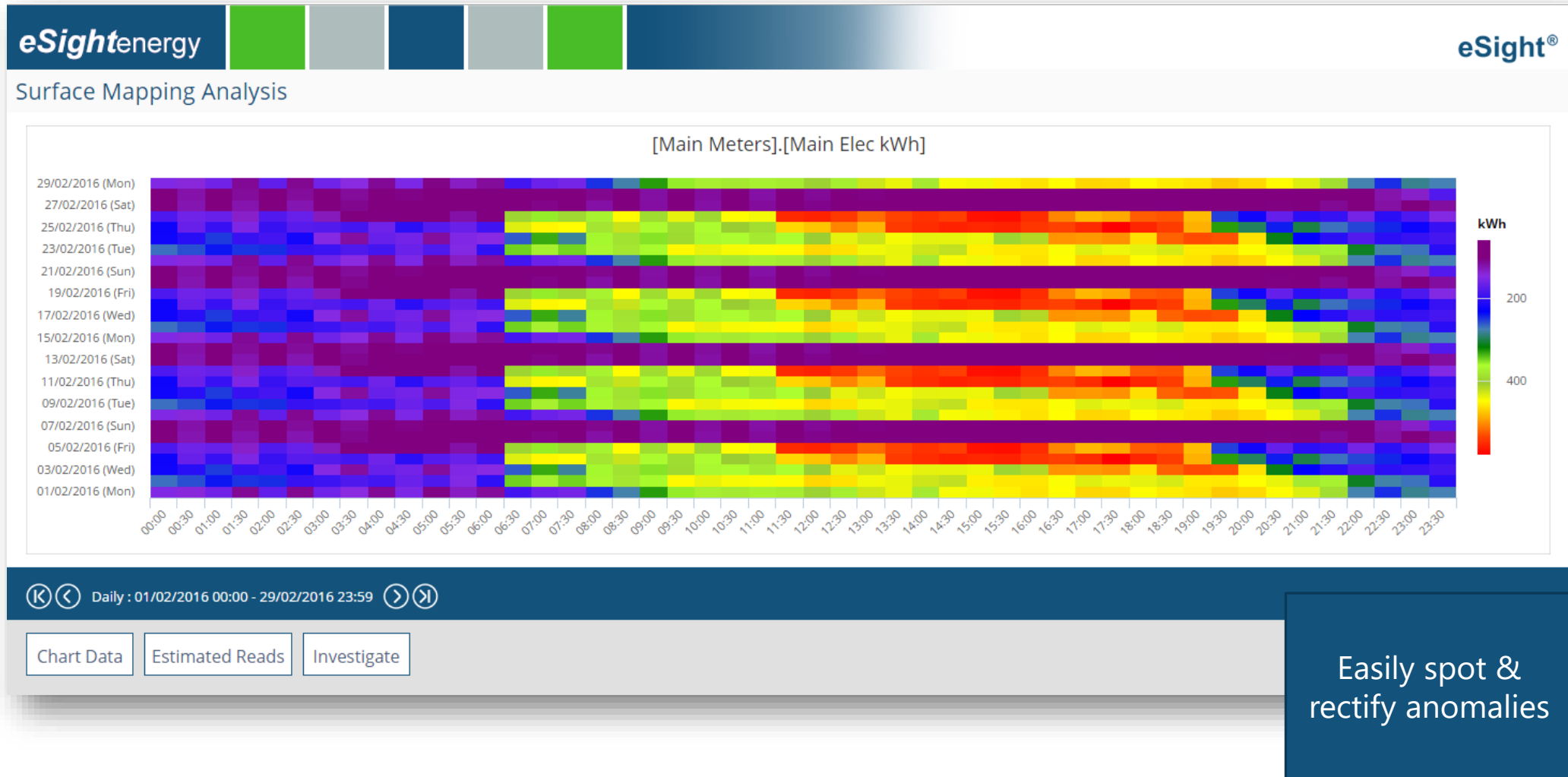
Rollup Reporting



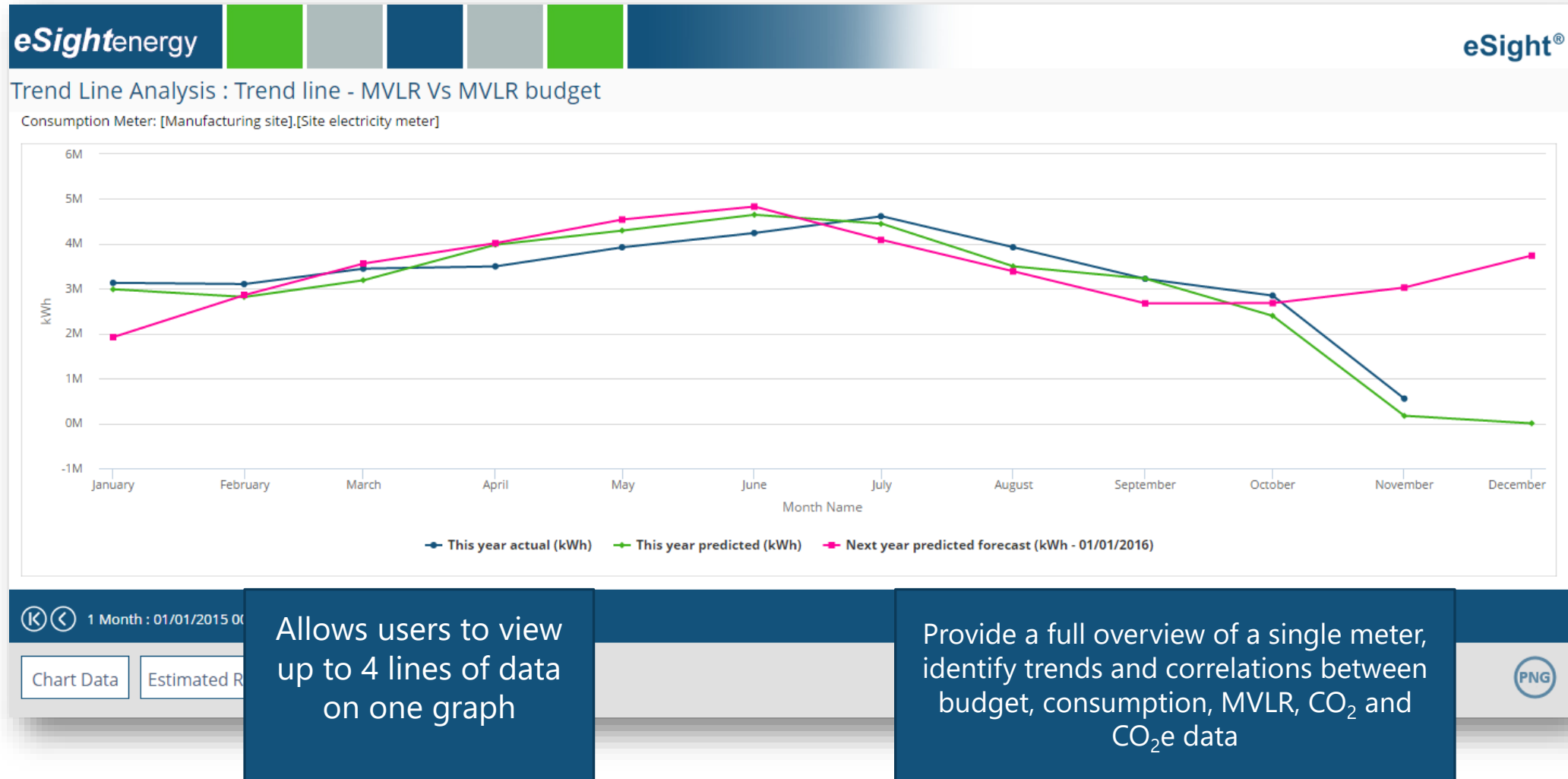
Uses aggregated data to provide a fast way of showing your consumption

Comparisons can be applied to compare one period with another and a large number of ways to filter the list of included meters

Single Meter Analysis



Trend Line Analysis

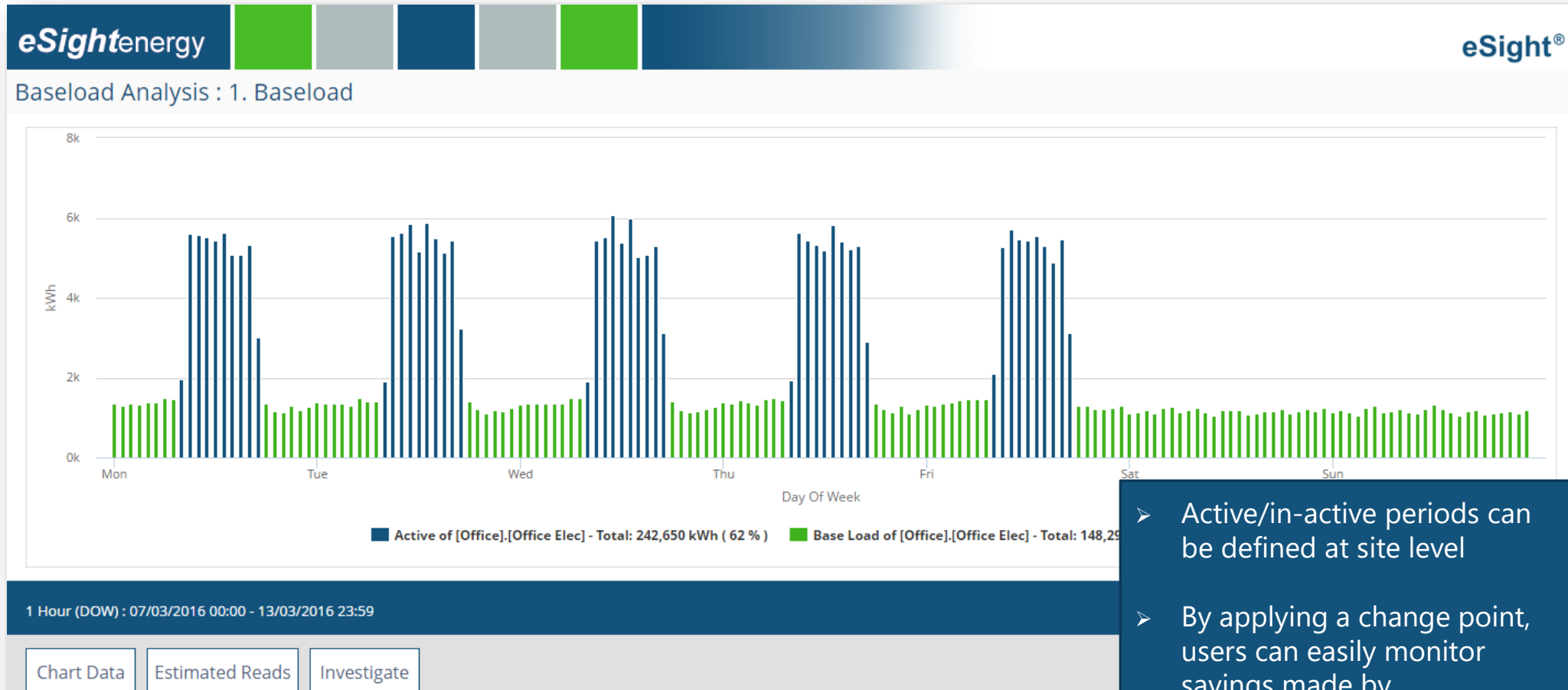


Electricity Analysis



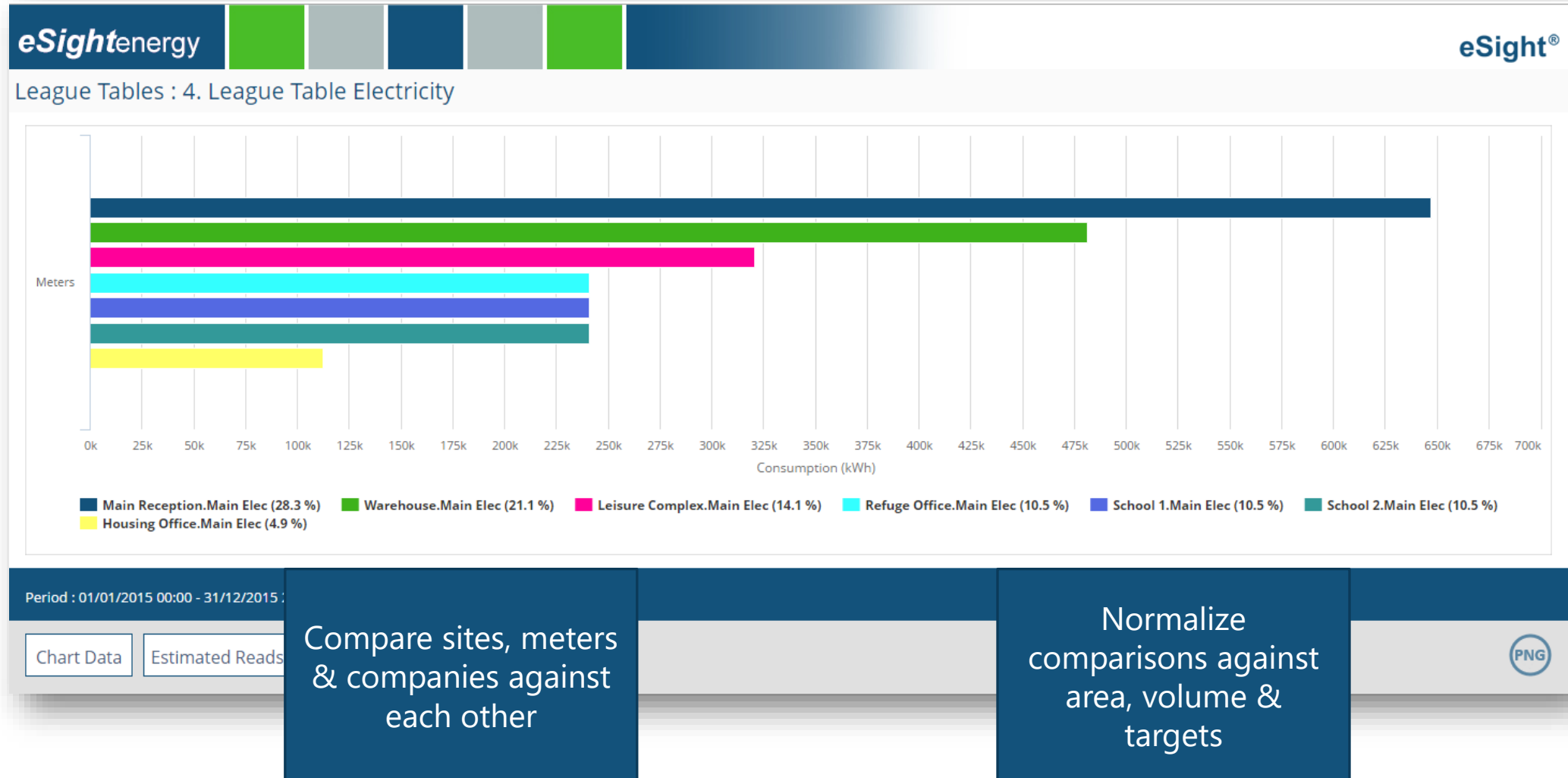
Provides a range of techniques specific to electricity meters

Baseload Analysis



- Active/in-active periods can be defined at site level
- By applying a change point, users can easily monitor savings made by implementing changes

KPI Ranking Analysis



Batch Processing Analysis

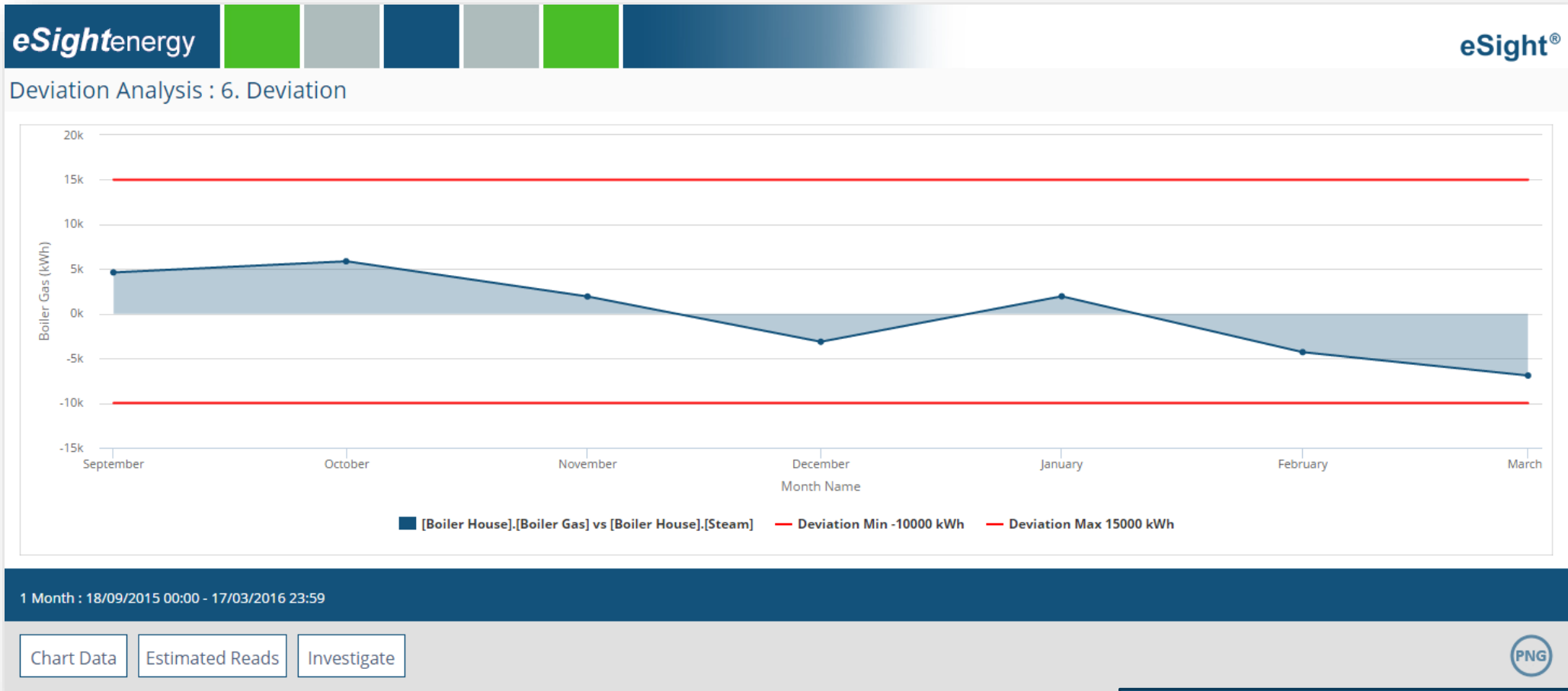


Specific Energy Consumption (SEC)



SEC analysis graphs measure consumption against a specific driving factor

Deviation Analysis

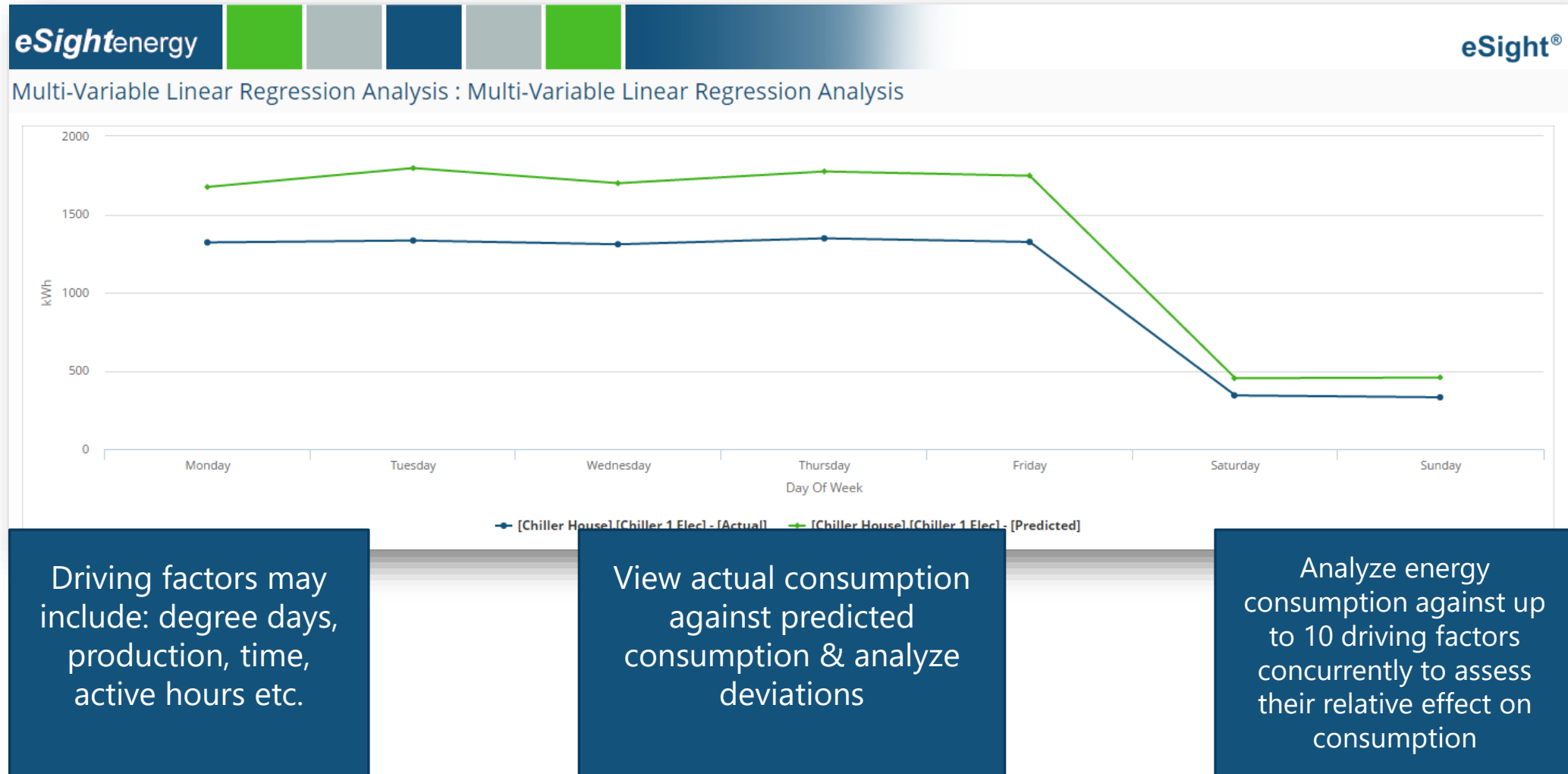


Set targets & view deviations

CUSUM Analysis



Multi-Variable Linear Regression Analysis



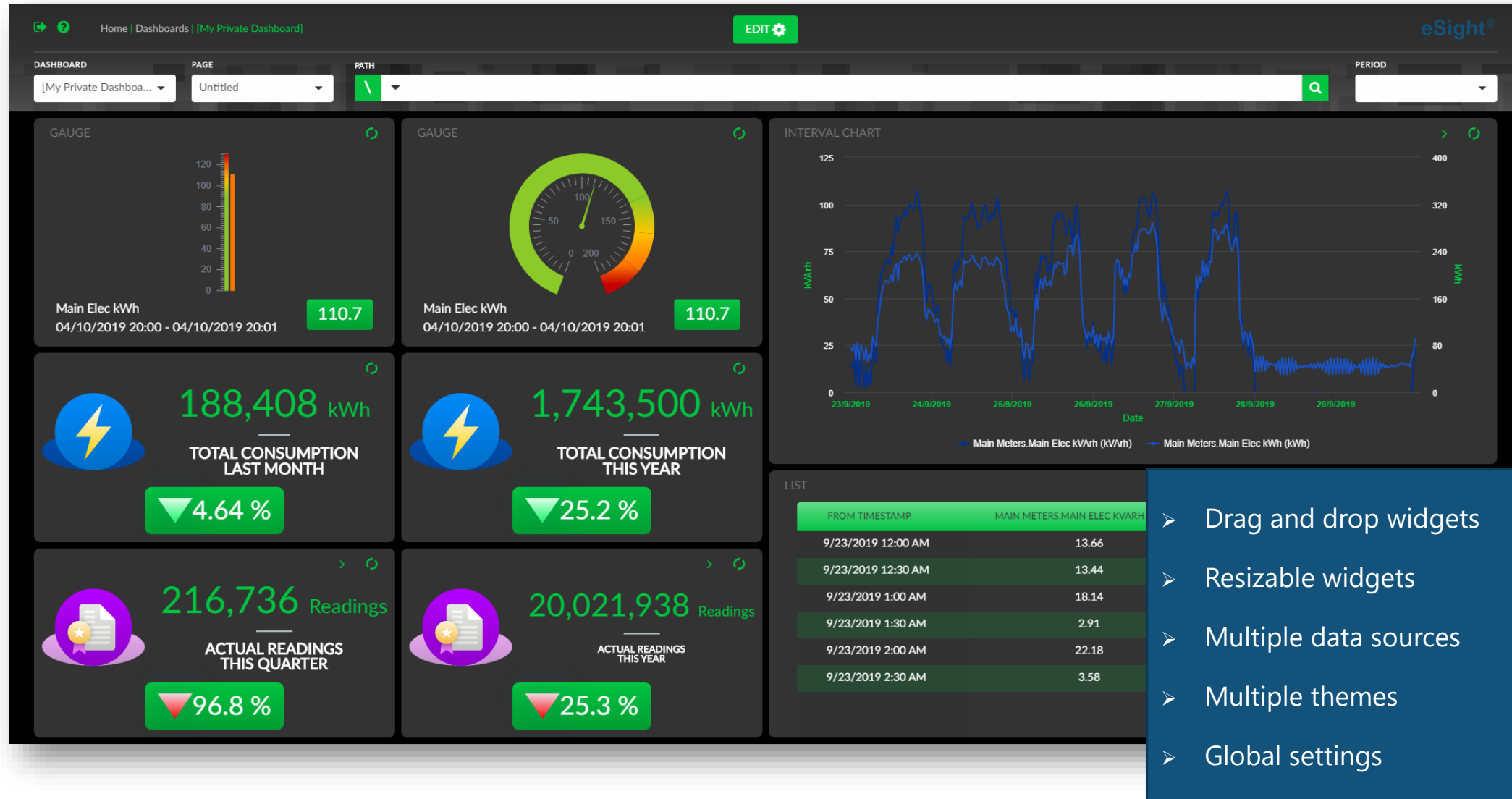


Dashboards

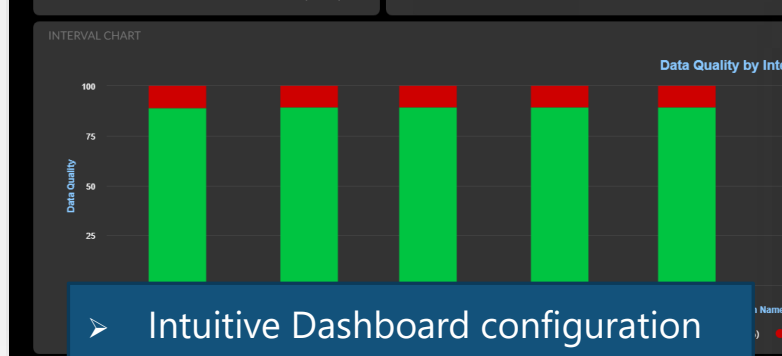
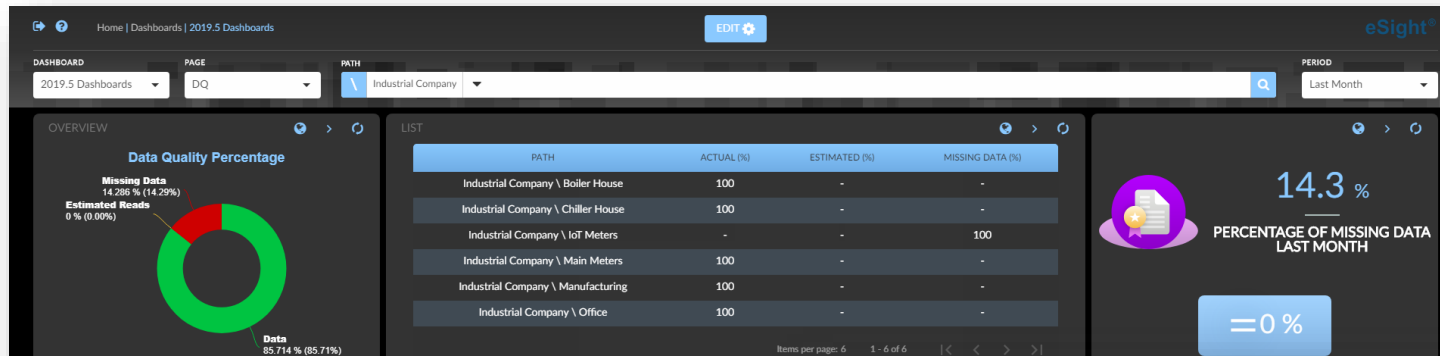


eSightenergy

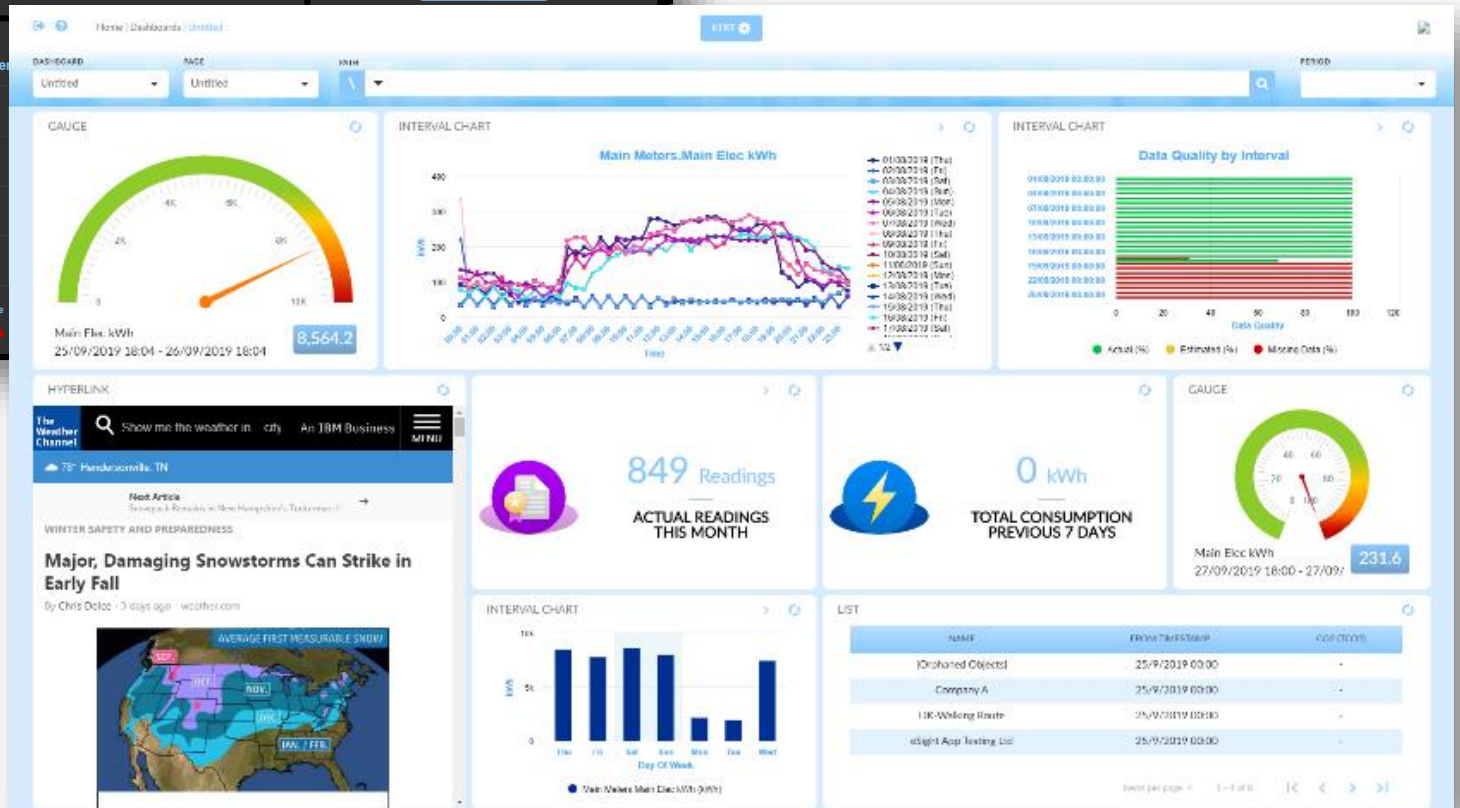
Facilities Management Dashboard



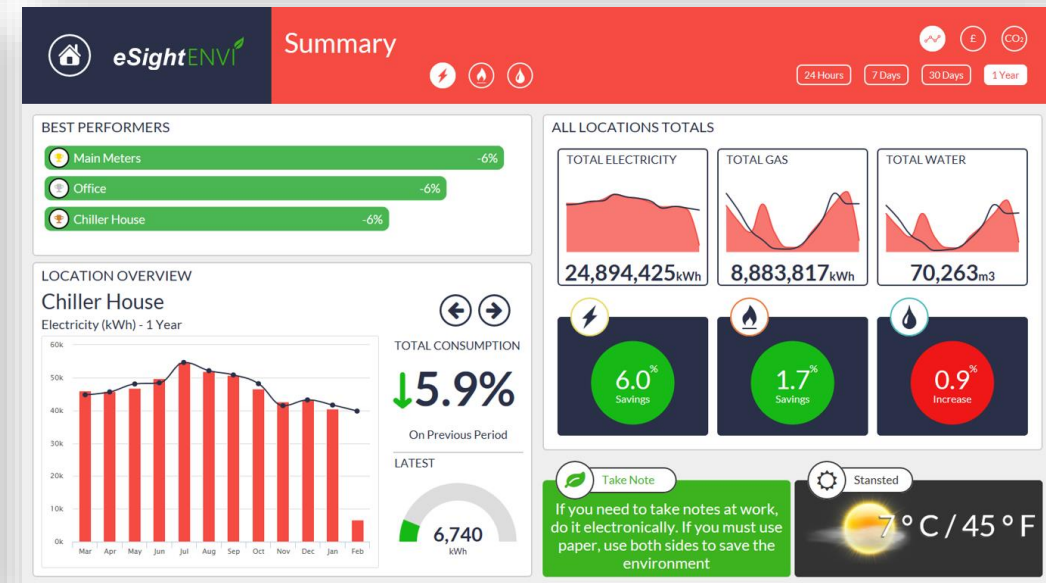
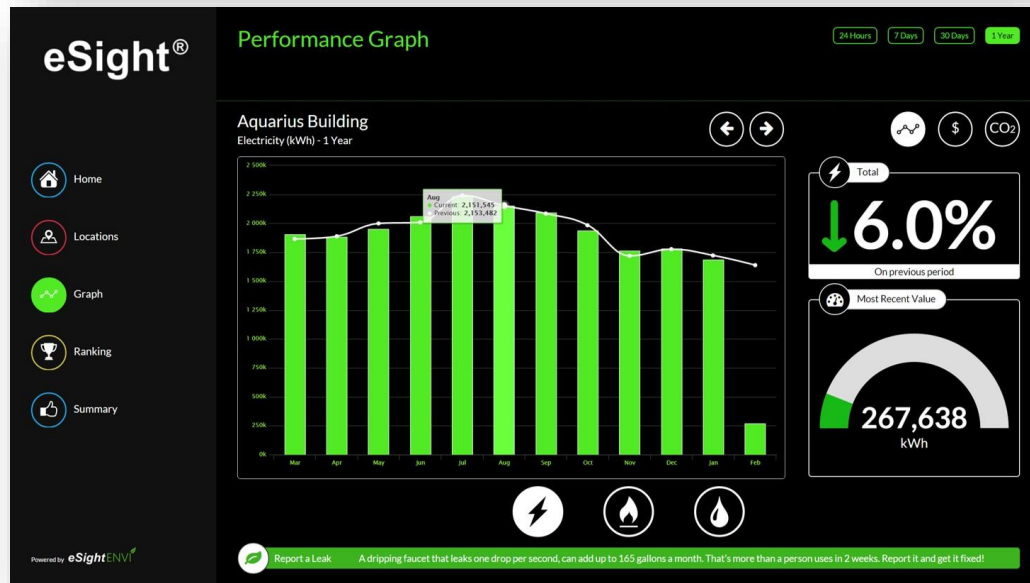
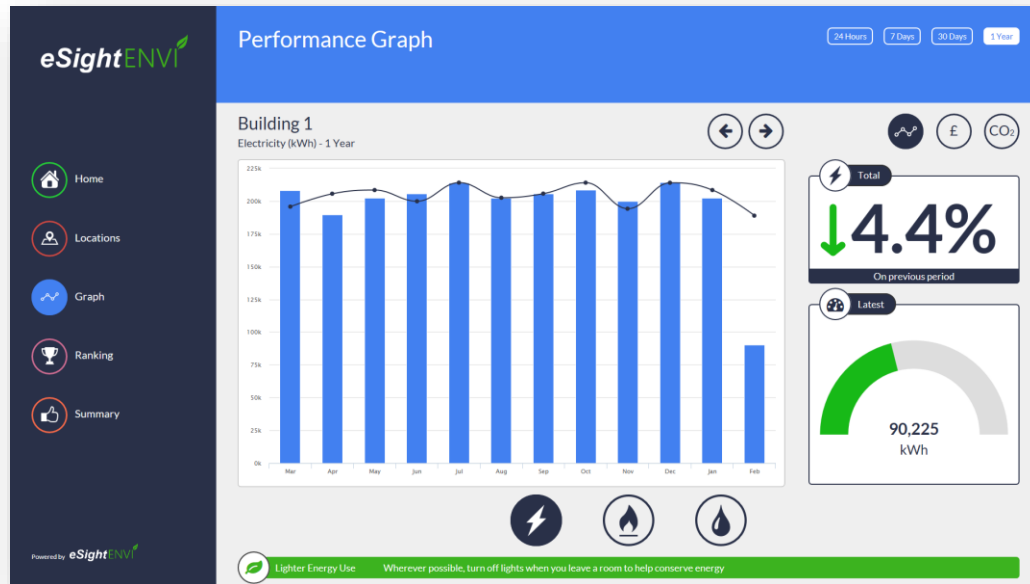
Facilities Management Dashboard



- Intuitive Dashboard configuration
- Parameter settings can be configured on the fly
- No more mass creation of dashboards
- Templates can pass through meters and periods directly from the dashboard



eSightENVI[®] - The Next Evolution of Energy Dashboards





Additional Options



eSightenergy

Alarms

eSightenergy QuickLinks Logout Help

Configuration Site Meter Analysis Report Contract Invoice Budget Bill Verification Alarm Benchmarking Tenant ENVI Data Exchange User About

Quickset Alarms

Pick the Meters you wish to view/set alarms for:

Filter [None] OR Pick a Site Industrial Company \ Manufacturing Select

All Quick Set Alarms are set as Priority High (2) To change the priority click here.

Save Alarms for Meters

Defaults	Missing Data	Range	Average	Average Profile
Meters	4	Min Max	Min Max Calc Over X Days	Min
[Manufacturing] [Compressed Air]	4			
[Manufacturing] [Prod Elec 1]	4			
[Manufacturing] [Prod Elec 2]	4			
[Manufacturing] [Prod Elec 3]	4			
[Manufacturing] [Production]	4			
[Manufacturing] [Temp Meter 1]	4			

Save Alarms for Meters

eSightenergy QuickLinks Logout Help

Configuration Site Meter Analysis Report Contract Invoice Budget Bill Verification Alarm Benchmarking Tenant ENVI Data Exchange User About

Edit Alarm Profile Group

General Weekday Lighting

Profile Weekday Lighting

Meter Industrial Company \ Office \ Office Lighting Select

From Date 15/01/2007 To Date 15/01/2007

Add Meter Data to Graph

Min 100 Max 20 Deviation Type Percentage

Add Min/Max lines OR Create Profile Manually

150
100
50
0

W/h

00:00 0 0 0
00:30 0 0 0
01:00 0 0 0
01:30 0 0 0
02:00 0 0 0
02:30 0 0 0

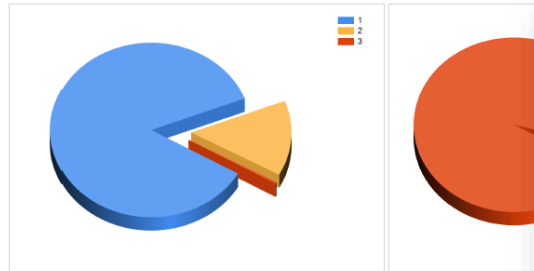
- Quickset Alarms
- Profile Alarms
- Action Raised Alarms

Automatic Reporting

GHG Summary

eSight®

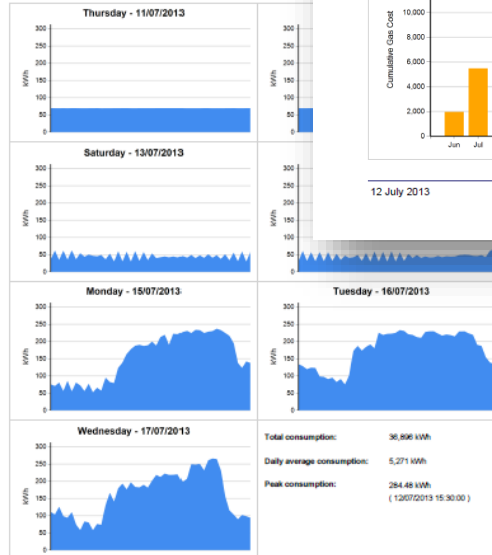
Period From: 01 January 2013			Period To: 31 December 2013		
Scope Breakdown			Fuel Type Breakdown		
Scope	tCO2e	%	Description	tCO2e	%
1	78,429.146	85.76%	Electricity	0.000	0.00%
2	12,741.955	13.93%	Gas	0.000	0.00%
3	278.797	0.30%	Grid Electricity	87,533.480	95.72%
Total	91,449.898	100.00%	Natural Gas	3,916.418	4.28%
			Total	91,449.898	100.00%



12 July 2013

Weekly Meter Profile

Company: Industrial Company
Site: Main Meters
Meter: Main Elec kWh



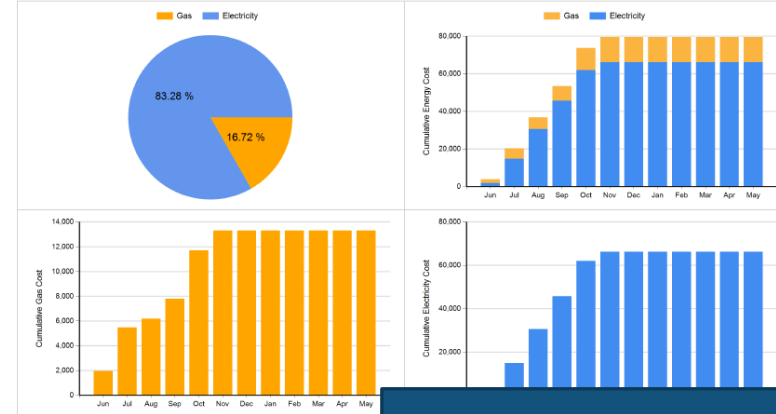
12 July 2013

1 / 1

Yearly Cumulative Cost

eSight®

Company: Industrial Company
Site: Main Meters
Period From: 24 June 2013
Period To: 23 June 2014



12 July 2013

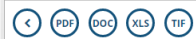
Pre-configured Report Library

Create your own with eSight
report with SQL Server
Reporting Services

Automatic report scheduling

Dynamic Reporting

Dynamic Report - Retail Co Electricity Costs



Electricity Cost - Last Year - Retail Co Total (Graph)

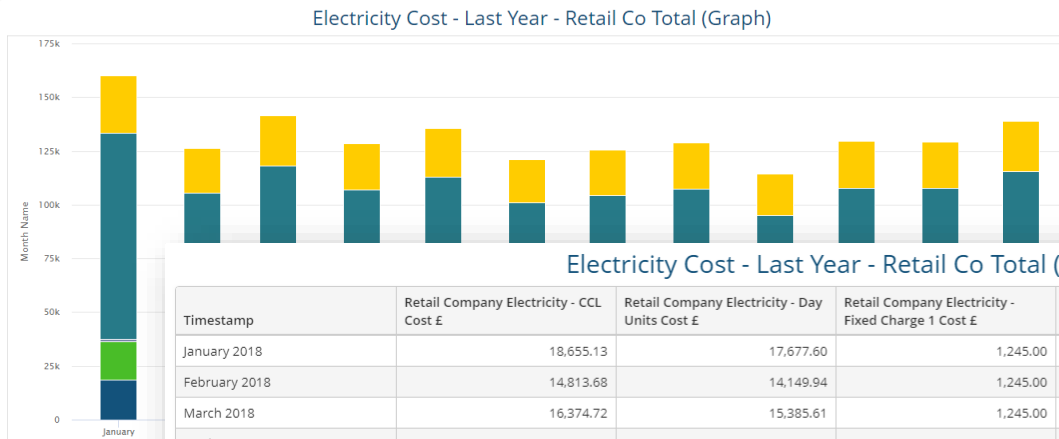
Electricity Cost - Last Year - Retail Co Total (Data)

Electricity Cost - Last Year - Northern Region (Graph)

Electricity Cost - Last Year - Northern Region (Data)

Electricity Cost - Last Year - Southern Region (Graph)

Electricity Cost - Last Year - Southern Region (Data)



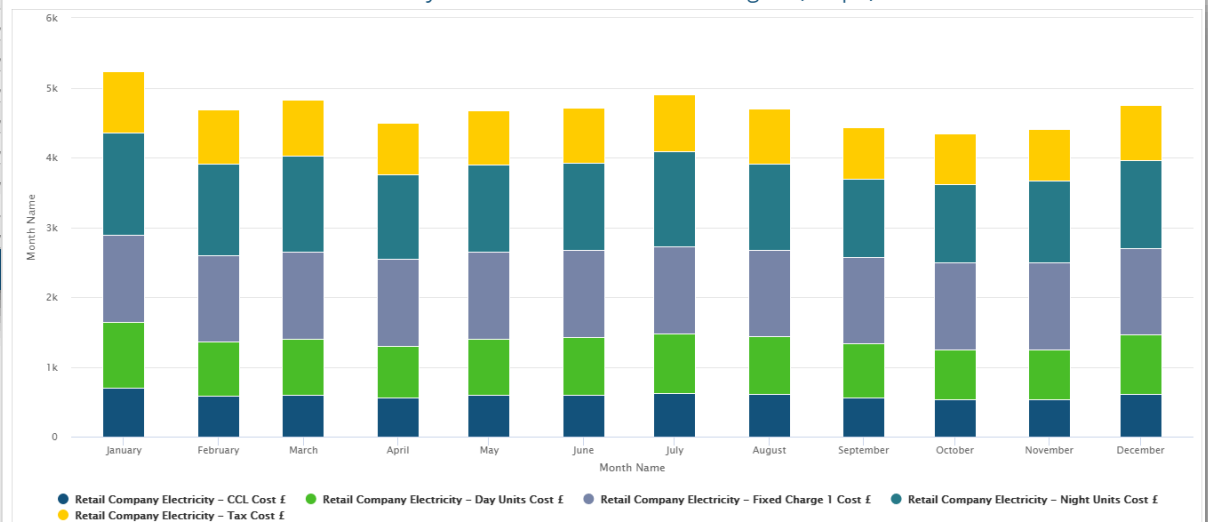
Electricity Cost - Last Year - Retail Co Total (Data)

Timestamp	Retail Company Electricity - CCL Cost £	Retail Company Electricity - Day Units Cost £	Retail Company Electricity - Fixed Charge 1 Cost £	Retail Company Electricity - Night Units Cost £	Retail Company Electricity - Tax Cost £
January 2018	18,655.13	17,677.60	1,245.00	95,742.32	26,664.01
February 2018	14,813.68	14,149.94	1,245.00	75,193.43	21,080.41
March 2018	16,374.72	15,385.61	1,245.00	85,010.07	23,603.08
April 2018	14,615.15	13,487.62	1,245.00	77,688.56	21,407.27
May 2018	15,194.59	13,757.47	1,245.00	82,731.78	22,585.77
June 2018	13,735.90	12,735.90	1,245.00	75,193.43	21,080.41
July 2018	14,399.27	13,735.90	1,245.00	75,193.43	21,080.41
August 2018	14,804.73	13,735.90	1,245.00	75,193.43	21,080.41
September 2018	13,200.81	13,735.90	1,245.00	75,193.43	21,080.41
October 2018	15,096.01	13,735.90	1,245.00	75,193.43	21,080.41
November 2018	15,236.74	13,735.90	1,245.00	75,193.43	21,080.41
December 2018	16,397.07	13,735.90	1,245.00	75,193.43	21,080.41
Total	182,523.80	171,735.90	12,450.00	827,317.78	225,857.77

31/2018 11:59 PM

Dynamic Reporting enables the combined reporting of multiple analyses onto a single report, which can be viewed interactively on-screen as well as scheduled and distributed via email.

Electricity Cost - Last Year - Southern Region (Graph)



1 Month : 1/1/2018 12:00 AM - 12/31/2018 11:59 PM



Report Development Consultancy Service

your design

- Implemented using Microsoft's SQL Server Reporting Services (SSRS) technology
- Create bespoke Reports with striking Data Visualisation

your exact requirements

- Embed complex calculations that extend eSight
- Automate from your energy data...
 - Paginated PDFs Management Reports
 - KPI Excel spreadsheets
 - JPG/PNG Images to communicate savings
- Drive consistency + cultivate engagement

delivered to your stakeholders

- Automated delivery to any email address from within eSight



No more manually consolidating & editing complex spreadsheets



How EIS Will Help Your Business



eSightenergy

EIS Business Benefits

- Reduce energy consumption, costs and carbon emissions by up to 30%
- Single central database accessible from anywhere across the globe
- End-to-end performance monitoring
- Automatic identification of exceptions enabling persistent commissioning
- Cut time spent creating energy reports
- Decrease water consumption and detect leaks
- Set targets, normalize data and quantify savings
- Simply calculate ROI on investments
- Gain staff buy-in and visitor engagement in energy management

