



Global Energy Management Software



60+

Countries

33k+

Users

\$5bn

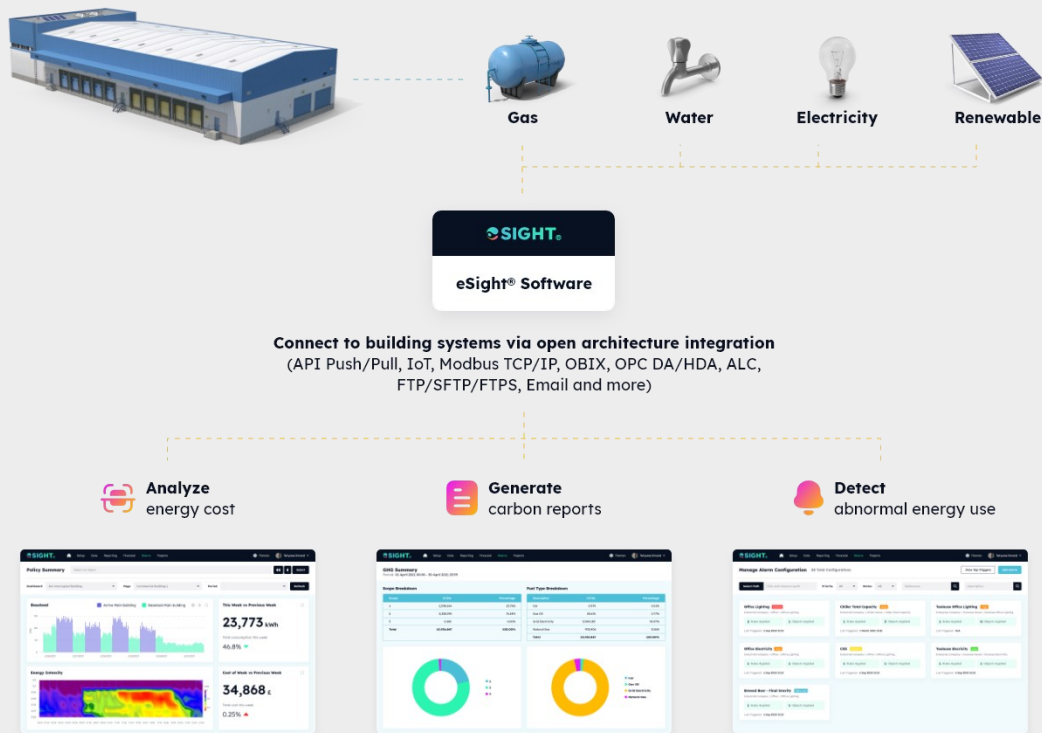
Monitored

260k+

Buildings



eSight® a modular solution tailored to your requirements, hosted by us or installed on site



Hardware independent

Import and export data from a wide range of systems and formats from anywhere on the planet.



Multi-lingual, multi-currency

Manage your energy across global locations. eSight® is available in 17 languages, supports local currencies and currency conversions.



Tailorable

Pick and choose from a wide range of functionality to suit your project. eSight® modules enable you to purchase only what you need.



Web based

Manage energy and identify savings without the need to install software onto a client PC.



Corporate branding

Utilize white labelling to customize the software to your corporate style, from replacement logos to a full OEM system.



Highly Evolved Product

Expansive functionality combined with sophisticated and powerful analytics utilize machine learning to deliver results.

One unified interface for all your systems

Over 200 integrations in 20 years makes for a painless customer experience when it come to:

Data collection

With your energy or other related data typically residing in many different locations, systems and formats, you could have data in spreadsheets, BMS systems, historians, IoT devices/systems, SCADA, paper bills or smart metering software and logging systems, production systems and more. eSight® helps bring all of your relevant data into a single, centralized solution for comprehensive management of all your data in one place.

Data quality

We understand from working with clients worldwide, that data quality is often a big issue. Often there are gaps, spikes, rollovers, errors of various sorts and that both identifying and correcting this can be a job in itself. eSight® provides tools that not only facilitate data collection but also help you automate correction of issues. The data quality toolkit enables you to see data issues and manage them in bulk.



Any system, any location, any format

Forget about data integration problems. eSight® includes a vast array of drivers and integration methods for data collection from virtually any system, format or database globally.



Energy Related Data

eSight® enables you to store all data related to your energy project. Whether it is energy, cost, carbon, production data, weather data. Or simply information about the building envelope, occupancy etc. eSight® can accommodate it all.



Manage data quality

Use tools contained within eSight® to detect and manage erroneous data. Autofill, adjust and manage complex issues with timestamps automatically, with raw data never amended for data accountability.

System Architecture | Key Data Drivers & Integration

eSight integrates with an extensive range of systems and formats, including (but not limited to) the following:

BAS & BMS



Data loggers



Meter manufacturers/operators



IoT Channels



Over 200 data import integrations available

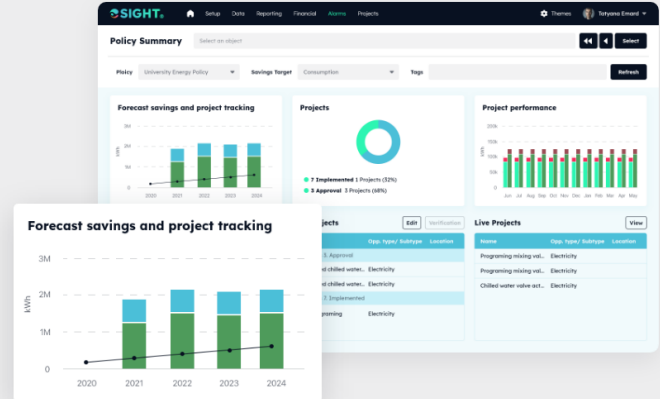
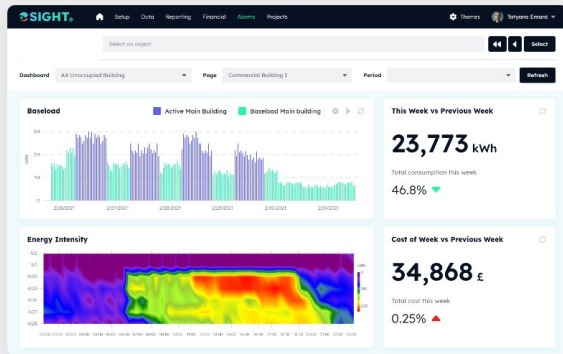
eSight also integrates with



User friendly interface

Quickly and easily navigate across all aspects of the platform.

View an advanced or express interface depending on user experience level.



Monitor Progress

Identify energy savings opportunities and take action to achieve results. eSight enables you to track progress over time to determine savings made in terms of usage, cost or carbon. Once a change has been implemented you can use tools within eSight to monitor your performance against a baseline and prevent deviations or slip-back.



Data collection

Collect data from all types of data sources. As long as the data exists somewhere, we can collect it.



Anomaly detection

Detect anomalies and generate automatic alarms for data outside of tolerated levels and notifies users by email.



Sustainability management

Always stay on top of consumption, quantities and cost. Run a variety of pre-defined report templates against different companies, sites and meters.



Utility bill management

Analyse energy in terms of cost, tariffs, create and monitor budgets. Compare and verify bill values against collected meter data.



Energy analysis

Perform broad analysis of energy data using a wide range of techniques. Create 'virtual' meters for data aggregation and plant efficiency.



Dashboards

Create a unified view of key business metrics at your fingertips.



Tenant billing

Save cost by automatically billing tenants for utilities usage.

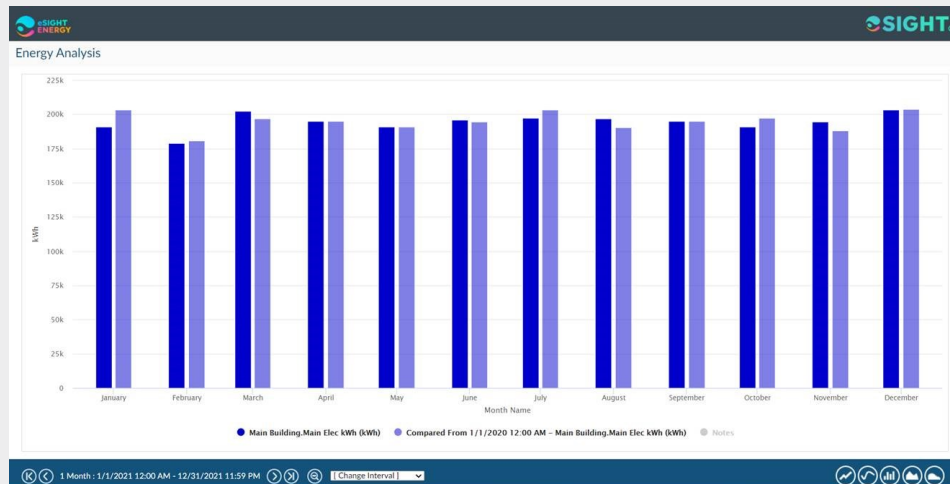


Solar monitoring

Get unmatched visibility and reporting of pv portfolio performance.

Establish an accurate baseline

Create a realistic energy baseline which serves as a standard against which future changes in energy performance are gauged. eSight's powerful analysis tools provide you with the most accurate energy baseline by taking into account up to 20 variable factors that may affect energy consumption, such as production output, occupancy, time of year, temperature etc. With this established, you can be fully confident in your forecasting and reporting of savings.

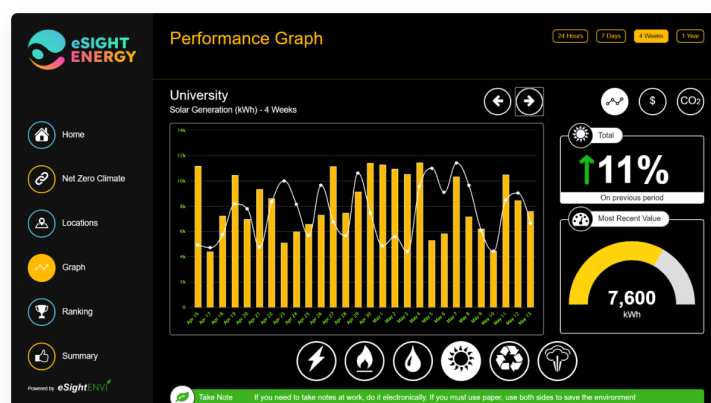
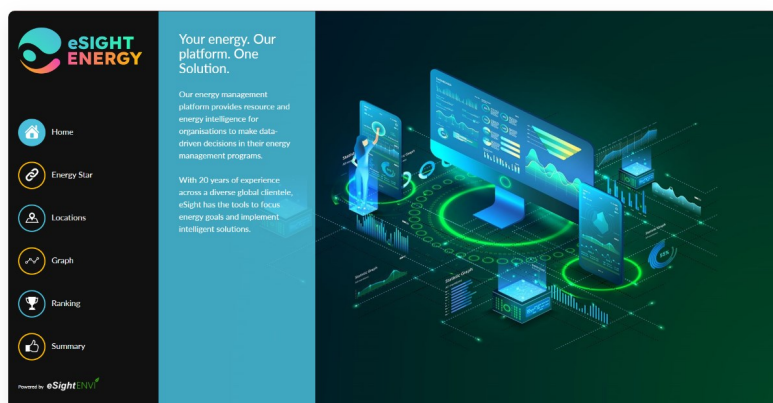


Net zero

Net Zero requires a detailed understanding of current carbon emissions and carbon offset projects. eSight provides highly accurate and flexible calculation tools to manage your science based targets, track performance and capture your baseline across the entire organization; including electricity and gas usage right through to car mileage of employees. Reporting is made easy with a full suite of analytical tools which can be used to analyse carbon at any level within your business.

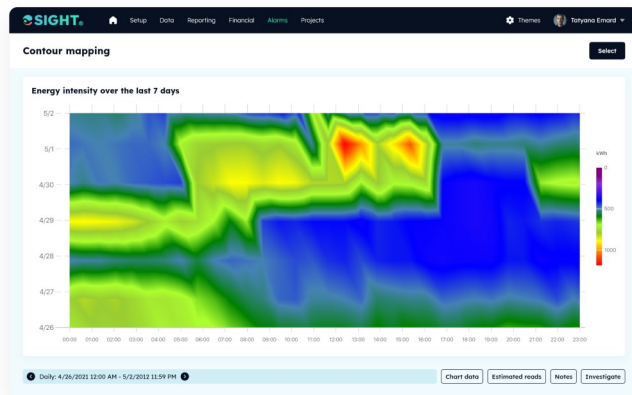
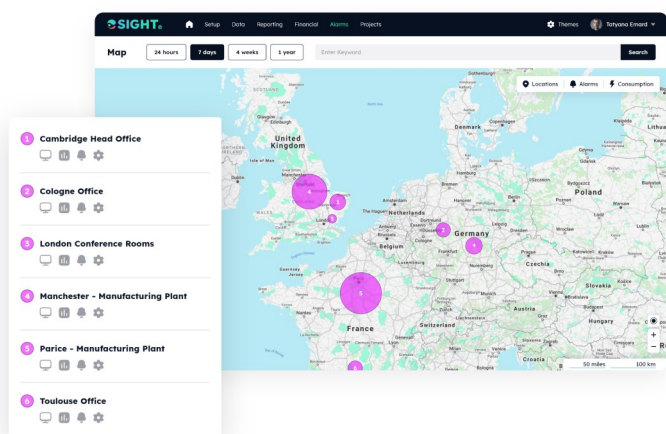
Stunning interactive energy dashboards with eSight® ENVI

The ENVI (ENergy Visualisation) dashboard brings you the latest dashboard technology in an interface that is perfect for display in public areas, but also highly functional so it can be used from a PC or tablet to dive into key energy data. ENVI provides KPI ranking to display best and worst performing areas of your business and run inter-company competitions. ENVI also includes slick canvas mapping technology, for quick navigation between different sites, buildings or locations.



Identify energy saving opportunities

Visualize energy consumption to clearly identify inefficiencies. Graphs such as the surface mapping of a single meter enable you to quickly recognize and react to unusual consumption, while tools such as Baseload Analysis highlight the energy being wasted during out-of-hours periods. Features such as KPI ranking, which ranks sites and departments by their performance, can determine where action needs to be taken by highlighting the less efficient sites.

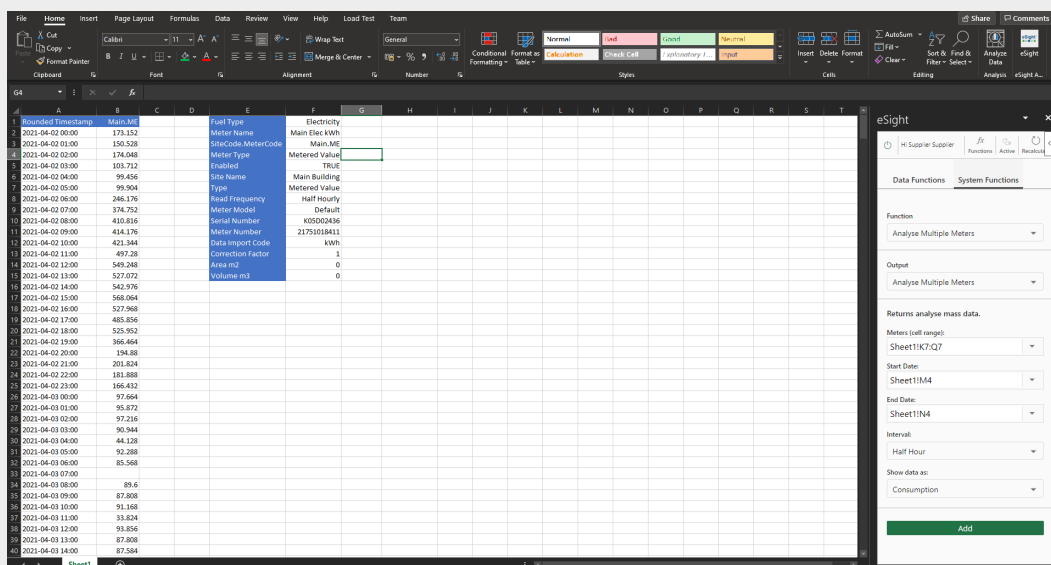


Map navigation

eSight® uses mapping technology to enable users to easily navigate between corporate sites and buildings in a user-friendly, visual format. Users can save locations as a dropped pin and zoom in to individual sites at the click of a button. Map Navigation can be used to create map views across your entire property portfolio, whether that's across global sites or on a single campus. View alarms and scaled consumption bubbles to quickly identify the highest consuming sites.

eSight® for Excel

Instantaneously exchange energy data from eSight® to Excel in a way that's most comfortable and familiar to you. With the power of eSight® for Excel, you can instantly download company, site, meter information, data and other key information directly from eSight® to Excel. The intuitive interface makes retrieving the data you need, an extremely quick and easy task.



Timestamp	Main.ME	Fuel Type	Electricity	Meter Name	MeterCode	MeterType	Meter Value	Meter Name	Main Building	Meter Model	Meter Number	Data Import Code	Collection Factor	Area m2	Volume m3
2021-04-02 00:00	173.152	Electricity	Main Elec kWh	Main Elec	150.526	Enabled	174.048	Main Building	Default	400000486	21751018411	1	0	0	0
2021-04-02 01:00	150.526	Electricity	Main Elec kWh	Main Elec	174.048	Enabled	174.048	Main Building	Default	400000486	21751018411	1	0	0	0
2021-04-02 02:00	174.048	Electricity	Main Elec kWh	Main Elec	174.048	Enabled	174.048	Main Building	Default	400000486	21751018411	1	0	0	0
2021-04-02 03:00	103.712	Electricity	Main Elec kWh	Main Elec	174.048	Enabled	174.048	Main Building	Default	400000486	21751018411	1	0	0	0
2021-04-02 04:00	99.406	Electricity	Main Elec kWh	Main Elec	174.048	Enabled	174.048	Main Building	Default	400000486	21751018411	1	0	0	0
2021-04-02 05:00	99.904	Electricity	Main Elec kWh	Main Elec	174.048	Enabled	174.048	Main Building	Default	400000486	21751018411	1	0	0	0
2021-04-02 06:00	246.176	Electricity	Main Elec kWh	Main Elec	174.048	Enabled	174.048	Main Building	Default	400000486	21751018411	1	0	0	0
2021-04-02 07:00	374.752	Electricity	Main Elec kWh	Main Elec	174.048	Enabled	174.048	Main Building	Default	400000486	21751018411	1	0	0	0
2021-04-02 08:00	410.816	Electricity	Main Elec kWh	Main Elec	174.048	Enabled	174.048	Main Building	Default	400000486	21751018411	1	0	0	0
2021-04-02 09:00	414.176	Electricity	Main Elec kWh	Main Elec	174.048	Enabled	174.048	Main Building	Default	400000486	21751018411	1	0	0	0
2021-04-02 10:00	421.344	Electricity	Main Elec kWh	Main Elec	174.048	Enabled	174.048	Main Building	Default	400000486	21751018411	1	0	0	0
2021-04-02 11:00	497.28	Electricity	Main Elec kWh	Main Elec	174.048	Enabled	174.048	Main Building	Default	400000486	21751018411	1	0	0	0
2021-04-02 12:00	549.248	Electricity	Main Elec kWh	Main Elec	174.048	Enabled	174.048	Main Building	Default	400000486	21751018411	1	0	0	0
2021-04-02 13:00	527.072	Electricity	Main Elec kWh	Main Elec	174.048	Enabled	174.048	Main Building	Default	400000486	21751018411	1	0	0	0
2021-04-02 14:00	542.976	Electricity	Main Elec kWh	Main Elec	174.048	Enabled	174.048	Main Building	Default	400000486	21751018411	1	0	0	0
2021-04-02 15:00	568.064	Electricity	Main Elec kWh	Main Elec	174.048	Enabled	174.048	Main Building	Default	400000486	21751018411	1	0	0	0
2021-04-02 16:00	527.968	Electricity	Main Elec kWh	Main Elec	174.048	Enabled	174.048	Main Building	Default	400000486	21751018411	1	0	0	0
2021-04-02 17:00	485.856	Electricity	Main Elec kWh	Main Elec	174.048	Enabled	174.048	Main Building	Default	400000486	21751018411	1	0	0	0
2021-04-02 18:00	525.952	Electricity	Main Elec kWh	Main Elec	174.048	Enabled	174.048	Main Building	Default	400000486	21751018411	1	0	0	0
2021-04-02 19:00	366.464	Electricity	Main Elec kWh	Main Elec	174.048	Enabled	174.048	Main Building	Default	400000486	21751018411	1	0	0	0
2021-04-02 20:00	194.88	Electricity	Main Elec kWh	Main Elec	174.048	Enabled	174.048	Main Building	Default	400000486	21751018411	1	0	0	0
2021-04-02 21:00	201.424	Electricity	Main Elec kWh	Main Elec	174.048	Enabled	174.048	Main Building	Default	400000486	21751018411	1	0	0	0
2021-04-02 22:00	181.888	Electricity	Main Elec kWh	Main Elec	174.048	Enabled	174.048	Main Building	Default	400000486	21751018411	1	0	0	0
2021-04-02 23:00	166.432	Electricity	Main Elec kWh	Main Elec	174.048	Enabled	174.048	Main Building	Default	400000486	21751018411	1	0	0	0
2021-04-03 00:00	97.664	Electricity	Main Elec kWh	Main Elec	174.048	Enabled	174.048	Main Building	Default	400000486	21751018411	1	0	0	0
2021-04-03 01:00	95.872	Electricity	Main Elec kWh	Main Elec	174.048	Enabled	174.048	Main Building	Default	400000486	21751018411	1	0	0	0
2021-04-03 02:00	97.216	Electricity	Main Elec kWh	Main Elec	174.048	Enabled	174.048	Main Building	Default	400000486	21751018411	1	0	0	0
2021-04-03 03:00	90.944	Electricity	Main Elec kWh	Main Elec	174.048	Enabled	174.048	Main Building	Default	400000486	21751018411	1	0	0	0
2021-04-03 04:00	44.128	Electricity	Main Elec kWh	Main Elec	174.048	Enabled	174.048	Main Building	Default	400000486	21751018411	1	0	0	0
2021-04-03 05:00	92.288	Electricity	Main Elec kWh	Main Elec	174.048	Enabled	174.048	Main Building	Default	400000486	21751018411	1	0	0	0
2021-04-03 06:00	85.360	Electricity	Main Elec kWh	Main Elec	174.048	Enabled	174.048	Main Building	Default	400000486	21751018411	1	0	0	0
2021-04-03 07:00	89.6	Electricity	Main Elec kWh	Main Elec	174.048	Enabled	174.048	Main Building	Default	400000486	21751018411	1	0	0	0
2021-04-03 08:00	87.808	Electricity	Main Elec kWh	Main Elec	174.048	Enabled	174.048	Main Building	Default	400000486	21751018411	1	0	0	0
2021-04-03 09:00	91.168	Electricity	Main Elec kWh	Main Elec	174.048	Enabled	174.048	Main Building	Default	400000486	21751018411	1	0	0	0
2021-04-03 10:00	33.824	Electricity	Main Elec kWh	Main Elec	174.048	Enabled	174.048	Main Building	Default	400000486	21751018411	1	0	0	0
2021-04-03 11:00	93.808	Electricity	Main Elec kWh	Main Elec	174.048	Enabled	174.048	Main Building	Default	400000486	21751018411	1	0	0	0
2021-04-03 12:00	87.808	Electricity	Main Elec kWh	Main Elec	174.048	Enabled	174.048	Main Building	Default	400000486	21751018411	1	0	0	0
2021-04-03 13:00	87.584	Electricity	Main Elec kWh	Main Elec	174.048	Enabled	174.048	Main Building	Default	400000486	21751018411	1	0	0	0

Quickly identify and target areas requiring attention



RICOH ARENA

The Ricoh Arena chose eSight® to manage energy throughout their site specifically because of its compatibility with existing infrastructure, its ease-of-use and the specific product modules required. Using eSight®, the Ricoh Arena was able to quickly identify and target areas requiring attention such as lighting and air-conditioning which were contributing 73% to total energy usage. Once new, more efficient equipment was installed, energy savings data was recorded, and ROI could quickly be calculated.

Overall reductions

15%

Reduction in electricity

6%

Reduced gas consumption

13%

Reduced water consumption

Brewers have achieved huge savings



“eSight® has enabled us to visualise and measure our utility usage against production in a way which was not previously possible; the benefits of integrating eSight® into our process have been invaluable”.

Paul Harris & Gary Parker

Site Energy Centre Manager & Continuous Improvement Manager, Carlsberg UK

Overall Reductions

16%

Effluent cost

10%

Energy consumption

10%

Water consumption



Rolling out eSight® across your organization

1



Meeting your project team

At the project launch you will be assigned a Project Team, led by a dedicated consultant who will act as the project lead and will be responsible for the implementation of your instance of eSight®. The consultant will lead the kick-off meeting, create your implementation plan including milestones, dates and deliverables. Any bespoke requirements will be sketched out here.

2



Survey pack

After the kick-off meeting you will receive a Survey Pack. This document is completed by you and tells us more about your meters, read frequency, sites and buildings. This information ensures your eSight® is configured correctly.

3



eSight® configuration

The consultant will now set up the tree configuration and ensure your eSight® system is organized correctly. User access with appropriate permissions assigned will be created along with your dashboards and specified reports.

4



Data validation

With the meter feeds set up, and meter data coming into eSight®, the data is checked for quality. Data is validated against historical or legacy data. If that's not available then the Survey Pack is referred back to ensure that the data feeding into eSight® is as expected.

5



Training

Now that your eSight® system is set up, data is feeding in and has been validated, you are ready for your training. Training is usually delivered by the project consultant and can be conducted either on-site or virtually.

6



Support handover

With eSight® implementation complete, your account will now transfer to your account manager and the Support Team. The Support Team will assist with any technical issues, tickets raised and SLAs. Your account manager will assist with general account requirements such as adding new user licenses, additional modules and renewals.

ABOUT ESIGHT ENERGY

eSight Energy specialises in energy management software and services. Our leading energy suite, eSight®, is the most sophisticated, fully web-enabled energy monitoring and targeting package available. Comprehensive and intuitive, eSight® provides an extensive range of techniques for managing all aspects of energy data effectively. It delivers the ability for data to be automatically imported into eSight® from nearly any device or system, bringing all energy data and reporting tools together into one application, which can be accessed from anywhere across the globe in a variety of languages. Uniquely flexible, eSight® is perfect for virtually every company size and industry sector.

CONTACT US AT

UK | +44(0)1954 231486
USA | +1 847 701 2340

FIND US AT

WEB | www.esightenergy.com
EMAIL | sales@esightenergy.com