



WARNING  
Cautela con voltajes nominales de 150V (P)  
antes de trabajar en los cables.

ADVERTENCIA  
Cautela con voltajes nominales de 150V (P)  
antes de trabajar en los cables.

480V 480V

480V 480V

480V 480V

120V DISCONNECT  
ON  
OFF  
120V 208V

120V 208V

INVERTER

¡PELIGRO!  
¡CERRAR!  
¡CERRAR!  
¡CERRAR!

SIEMENS  
480V DISCONNECT  
ON  
OFF  
480V 480V

SIEMENS  
480V DISCONNECT  
ON  
OFF  
480V EMERGENCY

480V 480V





WARNING  
CAUTION  
DANGER

1. Before working on this equipment, disconnect all power to the equipment and lock out the power source.

2. Do not touch any electrical components until you are sure the power is off.

3. Do not touch any electrical components until you are sure the power is off.

4. Do not touch any electrical components until you are sure the power is off.

5. Do not touch any electrical components until you are sure the power is off.

6. Do not touch any electrical components until you are sure the power is off.

7. Do not touch any electrical components until you are sure the power is off.

8. Do not touch any electrical components until you are sure the power is off.

9. Do not touch any electrical components until you are sure the power is off.

10. Do not touch any electrical components until you are sure the power is off.

WARNING  
CAUTION  
DANGER

1. Before working on this equipment, disconnect all power to the equipment and lock out the power source.

2. Do not touch any electrical components until you are sure the power is off.

3. Do not touch any electrical components until you are sure the power is off.

4. Do not touch any electrical components until you are sure the power is off.

5. Do not touch any electrical components until you are sure the power is off.

6. Do not touch any electrical components until you are sure the power is off.

7. Do not touch any electrical components until you are sure the power is off.

8. Do not touch any electrical components until you are sure the power is off.

9. Do not touch any electrical components until you are sure the power is off.

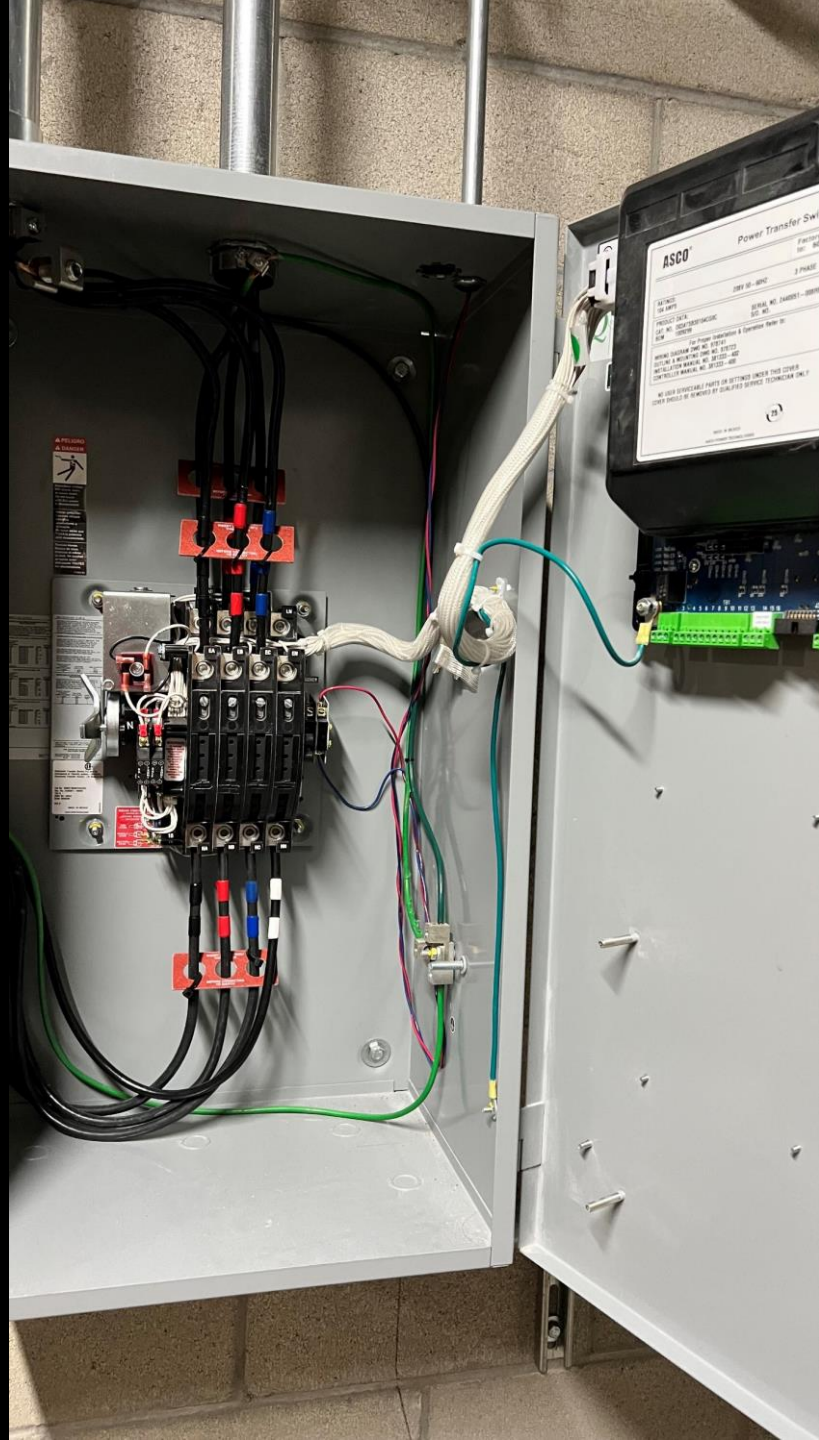
10. Do not touch any electrical components until you are sure the power is off.

480V 480V

480V EMERGENCY

480V EMERGENCY

Bullet









**MOTOR DISCONNECT ON**  
DISCONNECT INCOMING POWER  
SOURCE PRIOR TO SERVICING.  
MOTOR OVERLOAD DEVICE:  
TURN OFF THEN ON TO RESET.

  
**NORMAL  
OPERATION**

  
**COOLING  
FAILURE**

**STATUS  
INDICATORS**