

ENCLOSURE: TYPE 3R  
SHORT CIRCUIT  
CURRENT RATING: 5 RA  
RMS SYMMETRICAL @ 208VAC  
LARGEST MOTOR FLA: 4.6A  
LOAD CONTROL POWER CIRCUIT  
VOLTAGE: 208VAC, 3-PH, 60Hz  
FULL LOAD AMPS: 74A

UL US LISTED  
OPEN INDUSTRIAL CONTROL PANEL  
No. P-07086313

PowerCom  
COMM  
POWER

ATS 1

ATS 1

ATS 2

UPS

WARNING



MAINTAIN BYPASS

OUTPUT BREAKER



BYPASS BREAKER



BAT+ BAT-N BAT-

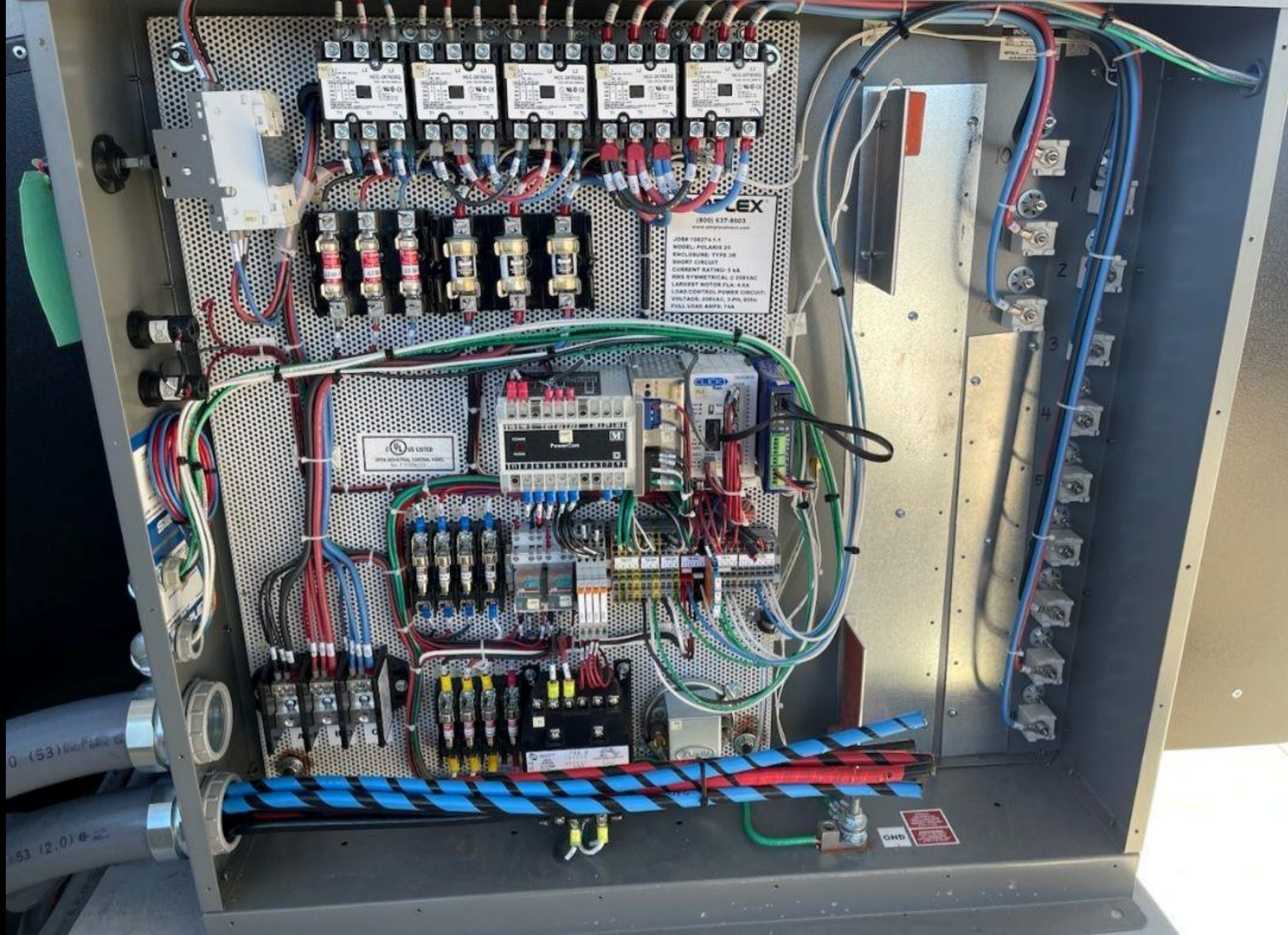


OUTPUT  
R S N



INPUT-  
R S T N





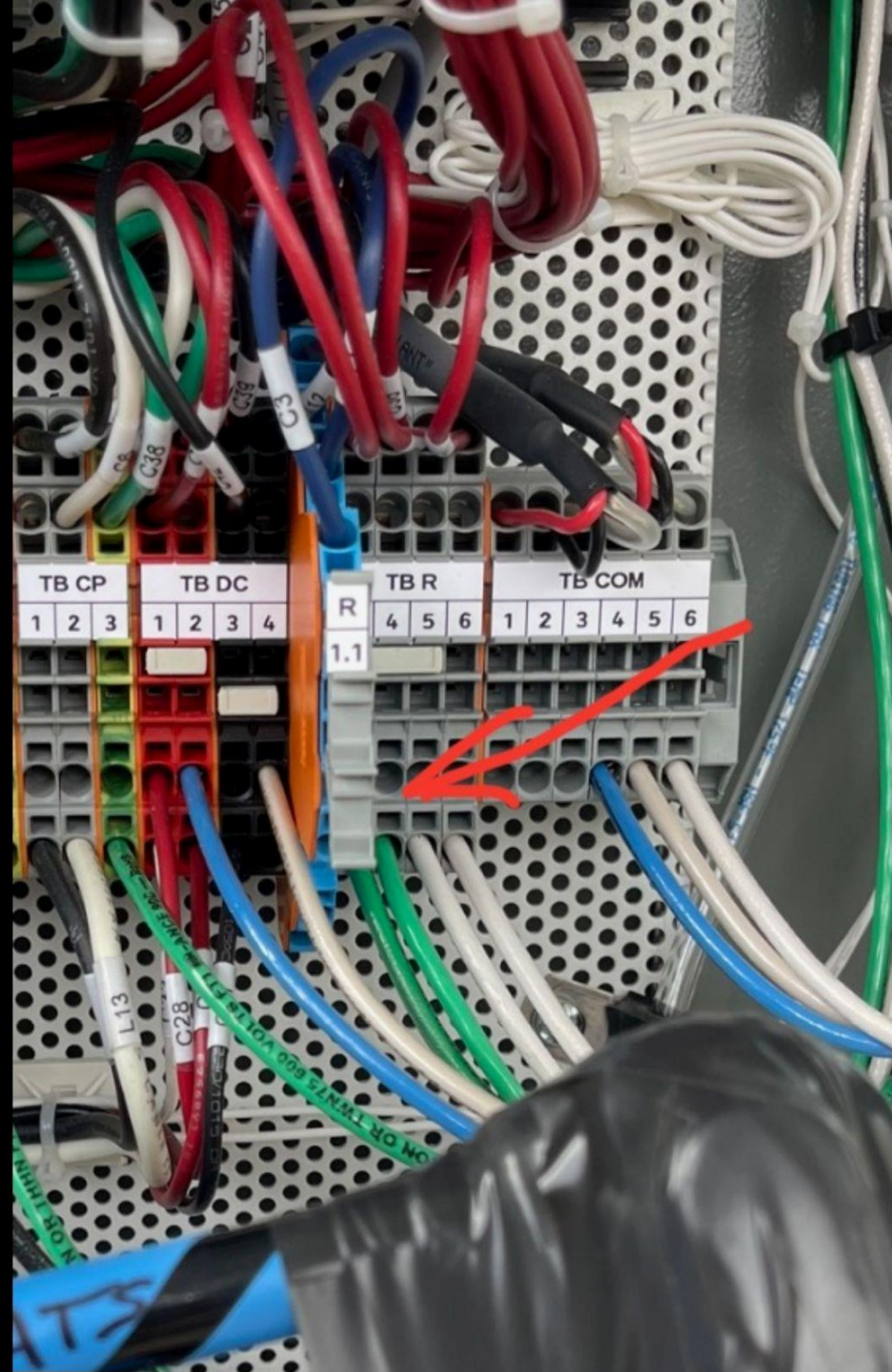
**PLEX**  
(800) 637-8603  
www.plexcontrols.com

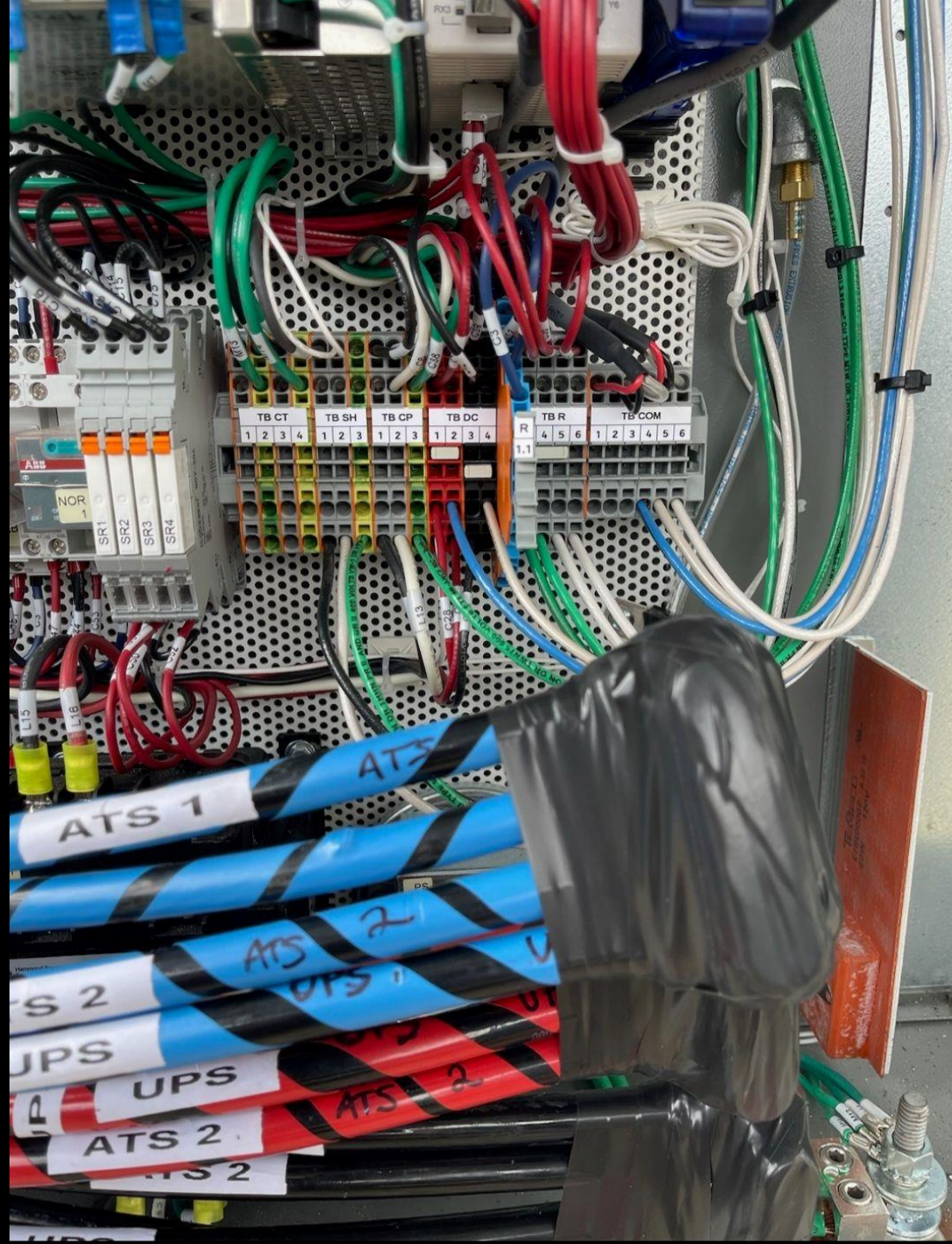
JOB# 10274-1-1  
MODEL: POLARIS 25  
ENCLOSURE TYPE 1R  
SHORT CIRCUIT  
CURRENT RATING: 3 AA  
RMS SYMMETRICAL 0 20VAC  
LARGEST MOTOR FLA: 4.6A  
LOAD/CONTROL POWER CIRCUIT  
VOLTAGE: 208VAC, 3 PH, 3W3  
FULL LOAD AMP: 7.6A

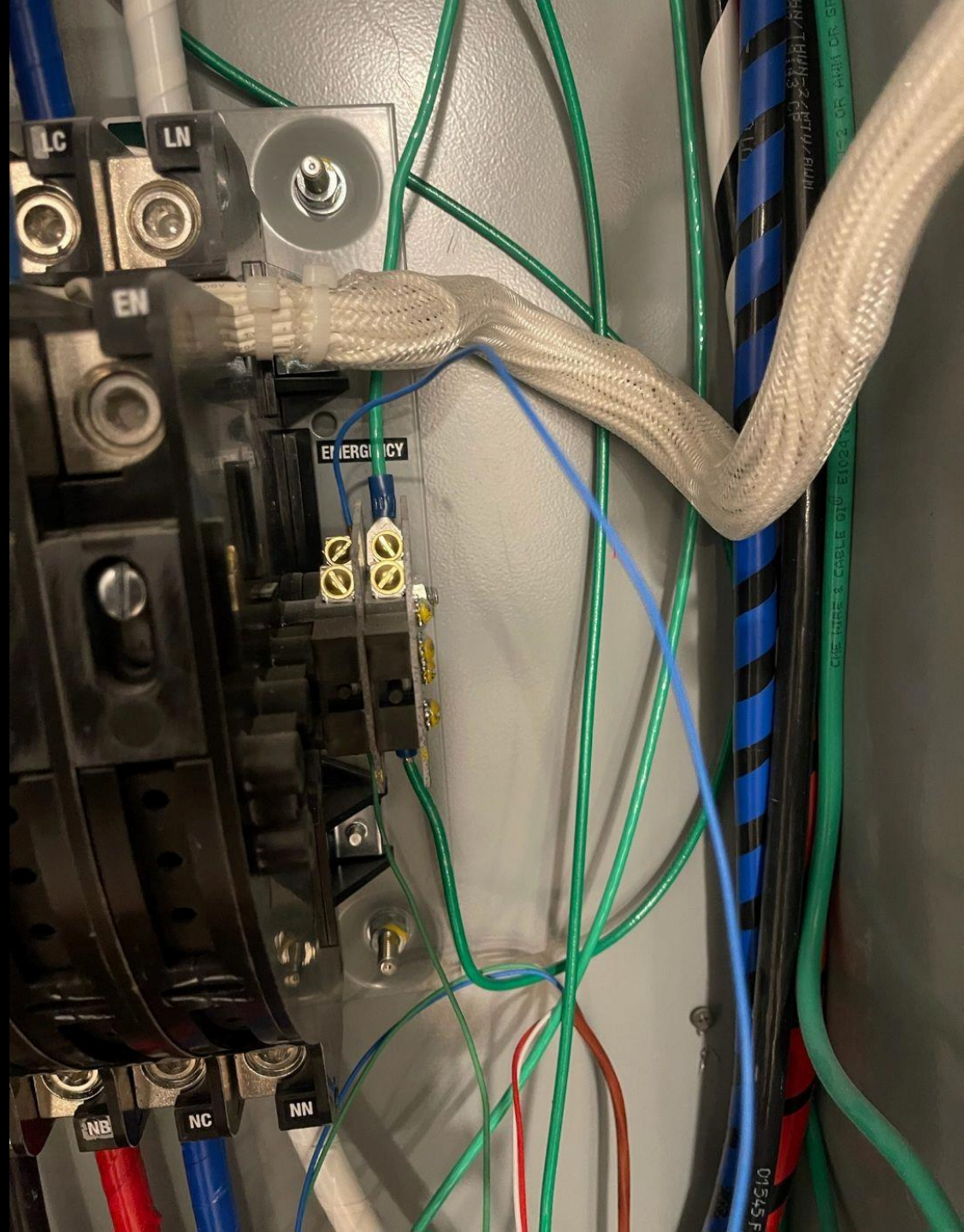
**PLS LIMITED**  
1075 INDUSTRIAL CONTROL PARK  
100 1/2 INDUSTRIAL BLVD.

**OND**

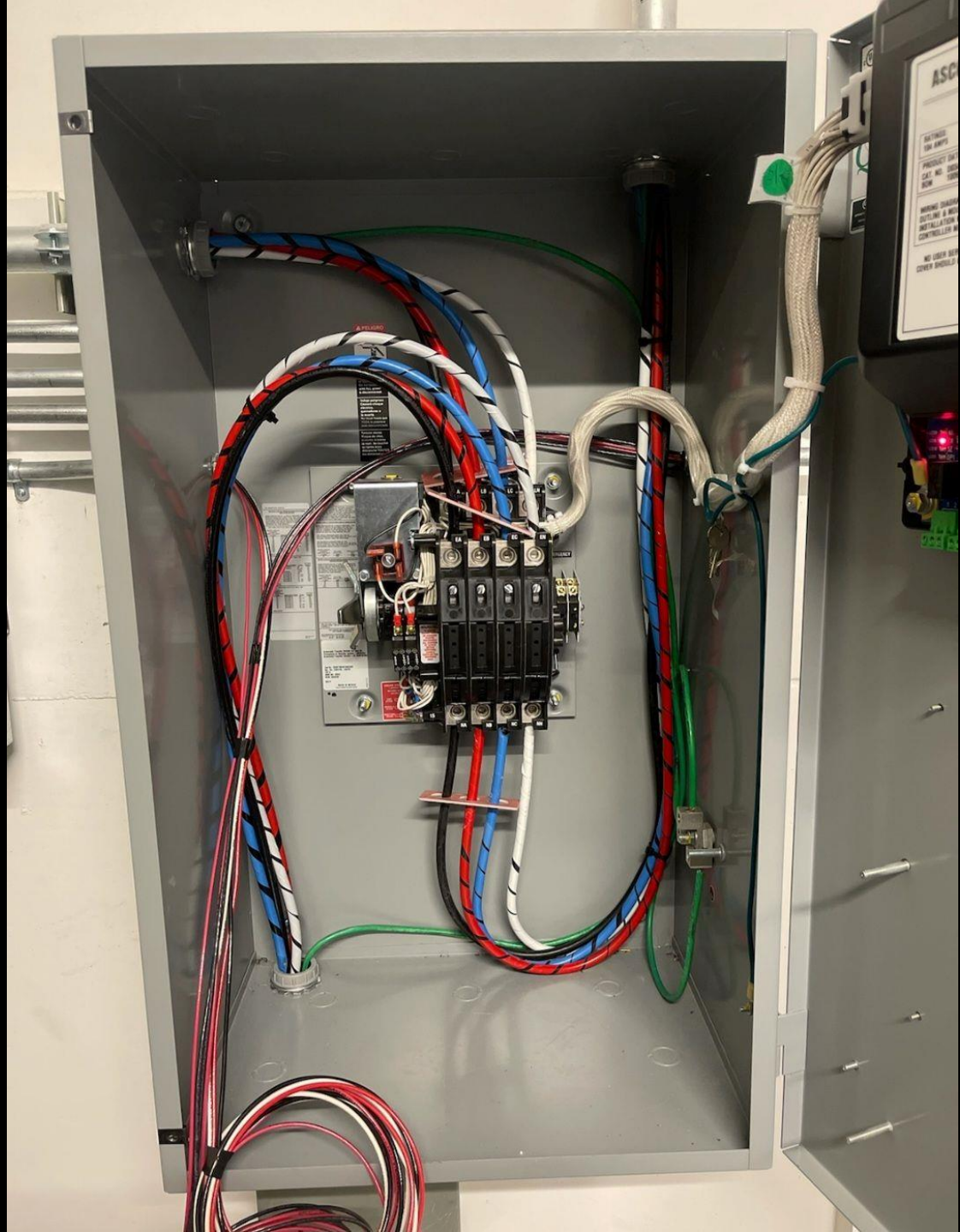
0 (53) 1/2" FIP  
53 (2.0)





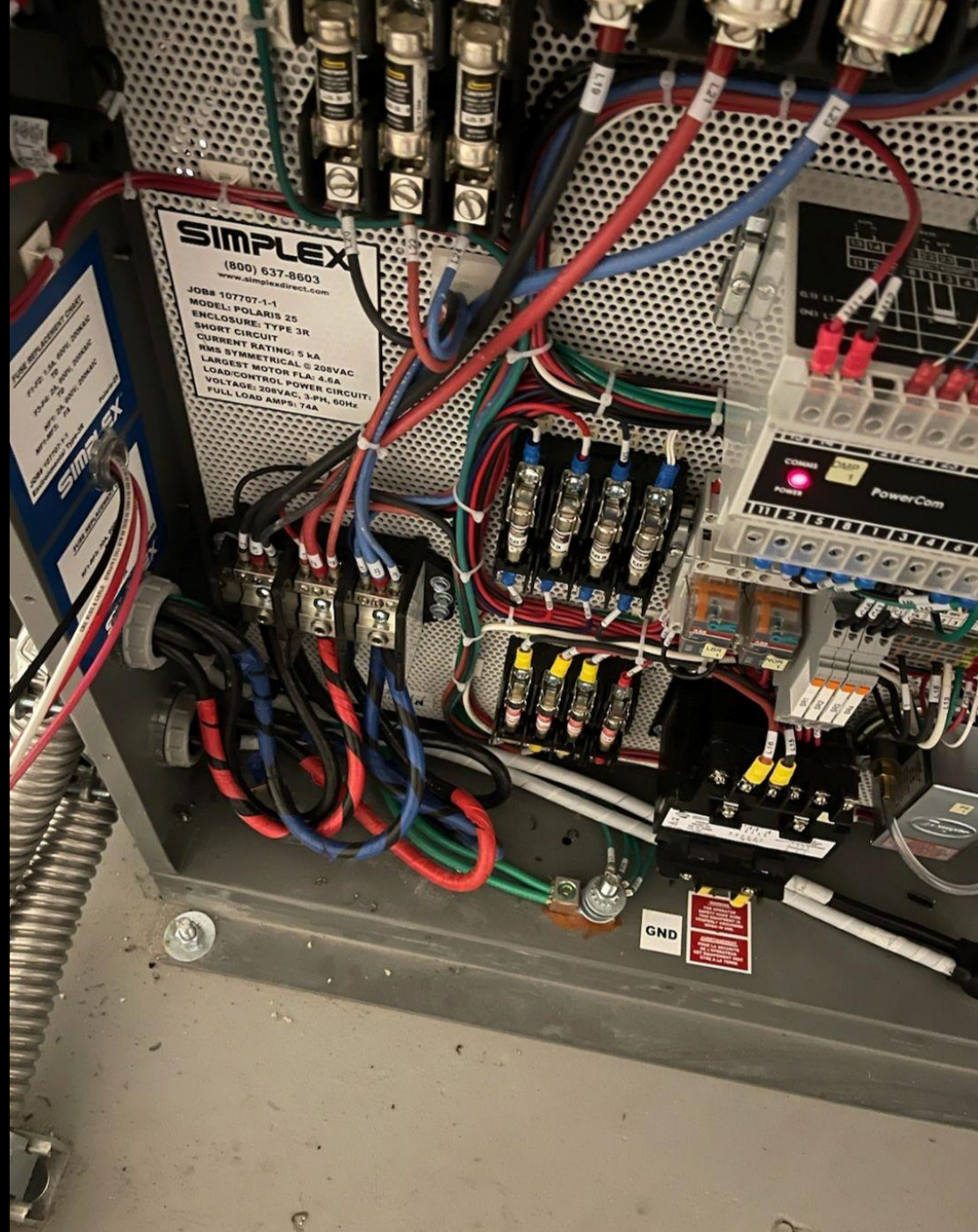












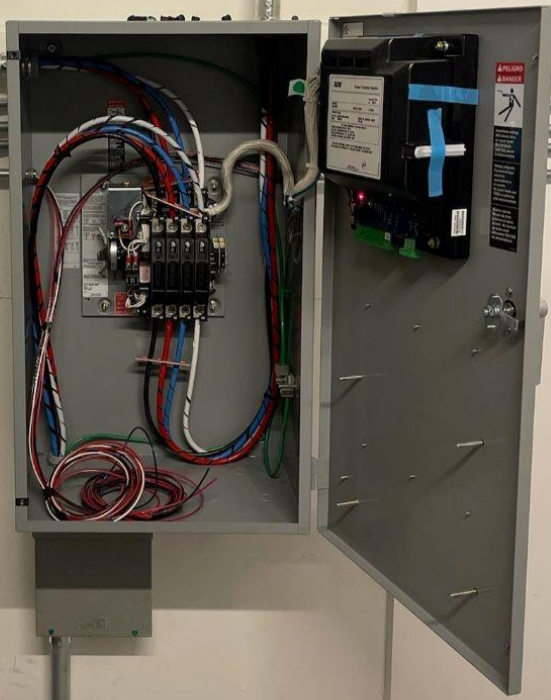
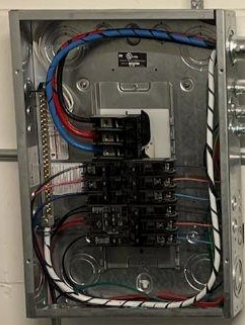
**SIMPLEX**

(800) 637-8603  
www.simplexdirect.com

JOB# 107707-1-1  
MODEL POLARIS 25  
ENCLOSURE TYPE 3R  
SHORT CIRCUIT  
CURRENT RATING: 5 KA  
RMS SYMMETRICAL @ 208VAC  
LARGEST MOTOR FLA: 4.6A  
LOAD/CONTROL POWER CIRCUIT  
FULL LOAD AMPS: 74A

POWER  
STOP  
POWER  
PowerCom

GND



UL LISTED  
NEUTRAL CONTROL PANEL ENCLOSURE  
TYPE 1  
NO. F49266039  
Nu-Way Industries

Q  
3367

**ASCO** Power Transfer Switch

RATINGS: 104 AMPS	200V 50-60HZ	3 PHASE	Factory Set to: 60Hz
----------------------	--------------	---------	-------------------------

PRODUCT DATA:  
CAT. NO. D03ATS830104C00C SERIAL NO. 2394706-002RE  
BOM 1009299 SRO. NO.

For Proper Installation & Operation Refer to:  
WIRING DIAGRAM DWG NO. 978741  
OUTLINE & MOUNTING DWG NO. 978723  
INSTALLATION MANUAL NO. 381333-402  
CONTROLLER MANUAL NO. 381333-400

NO USER SERVICEABLE PARTS OR SETTINGS UNDER THIS COVER  
COVER SHOULD BE REMOVED BY QUALIFIED SERVICE TECHNICIAN ONLY

MADE IN MEXICO  
ASCO POWER TECHNOLOGIES

**PELIGRO**  
**DANGER**

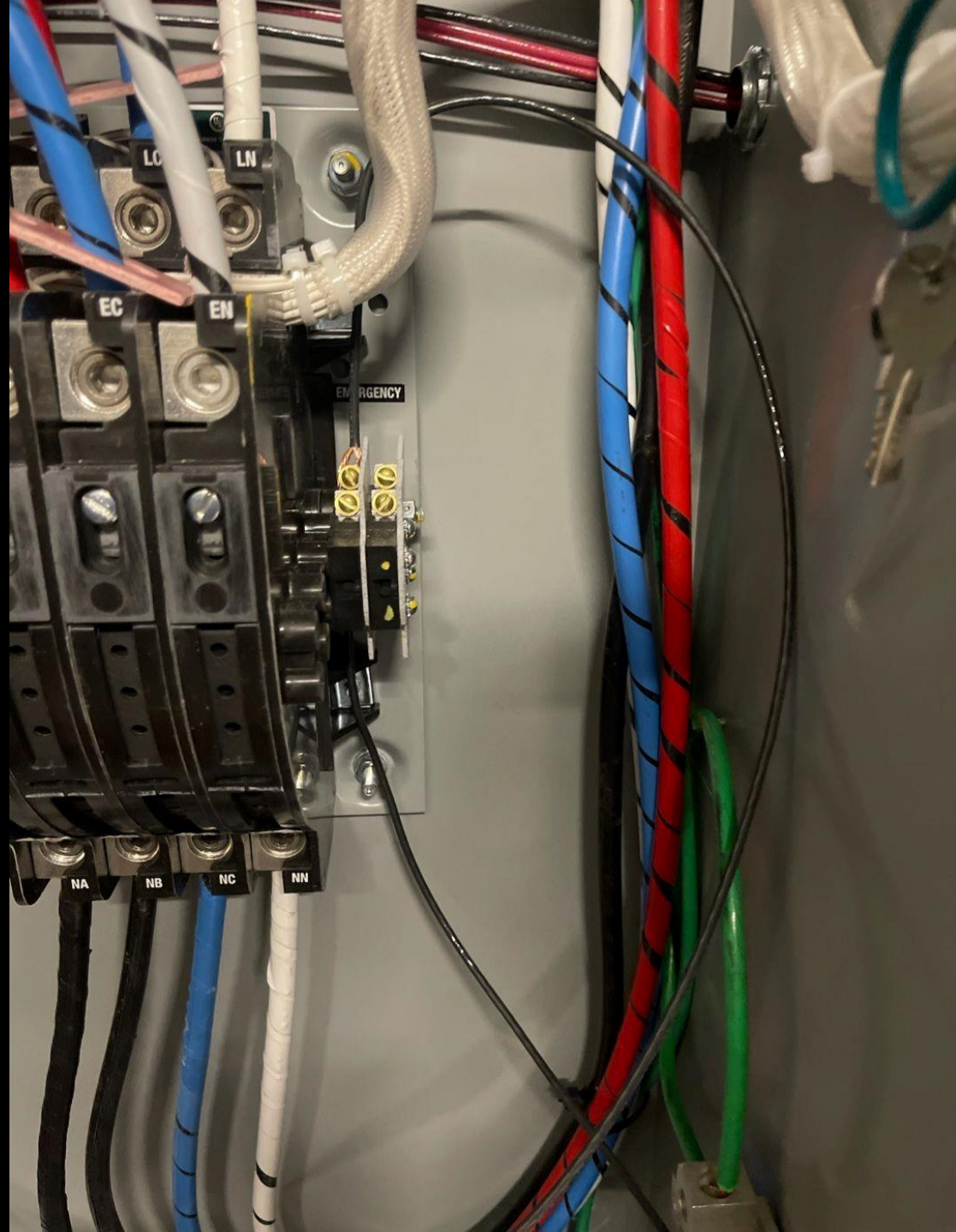


Hazardous voltage.  
Will shock, burn,  
or cause death,  
if not touched.  
ALL power  
is disconnected.

Voltaje peligroso.  
Causará choque  
eléctrico,  
quemaduras o  
la muerte.  
No tocar hasta que  
TODA la potencia  
este desconectada.

Tension élevée.  
Risque de choc,  
brûlures et même  
la mort. Ne toucher  
qu'après avoir  
débranché TOUTES  
les alimentations.





SIMPLEX

Misc Settings

Auto Exercise



45 %

Target %

50

Auto Exercise  
and  
Fixed Load  
use Auto Level Step Up  
Delay

Press to Bypass  
Load Dump  
Input

Press for Single  
Phase Operation

Gen Overload  
Protection

Min. Freq

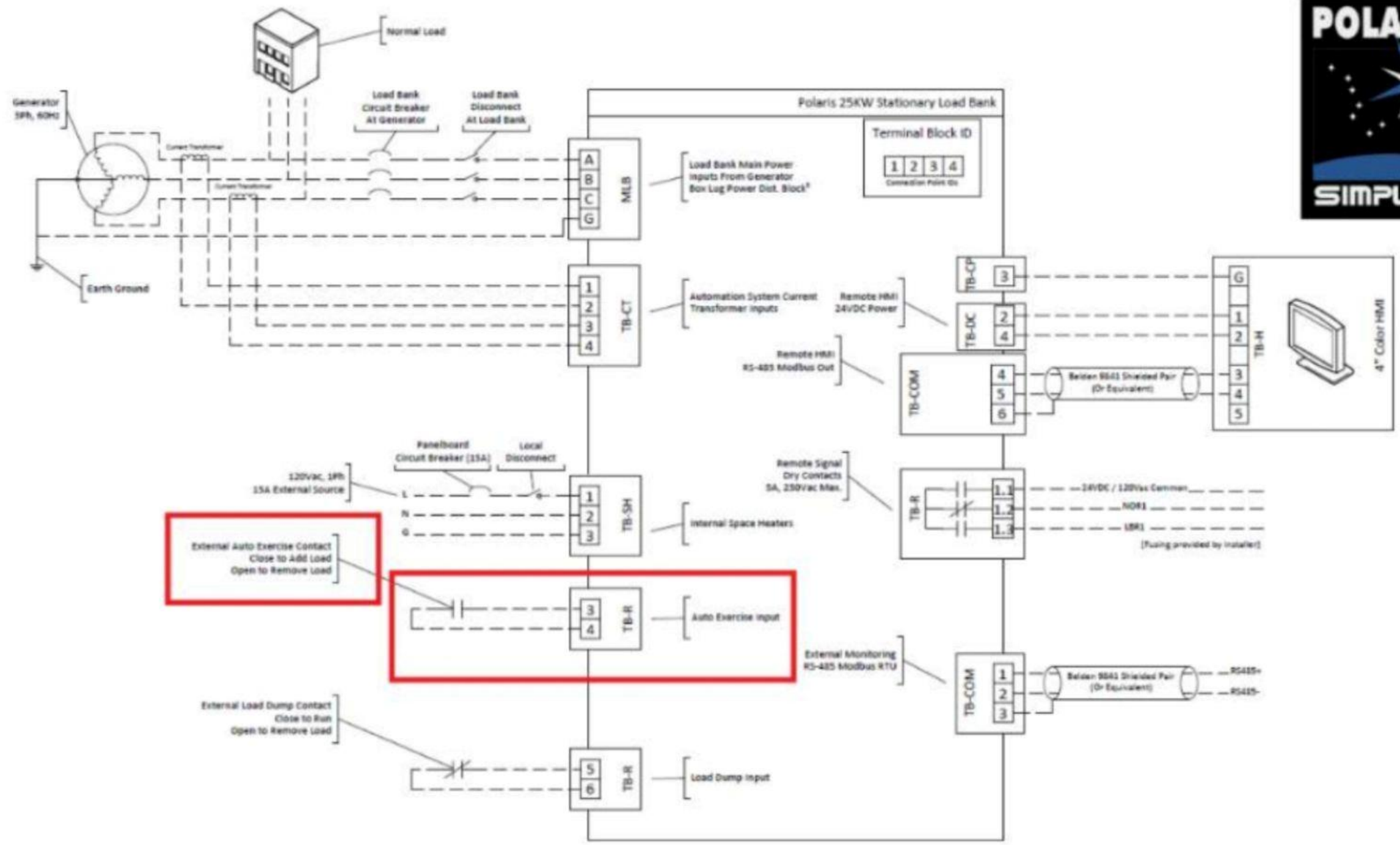
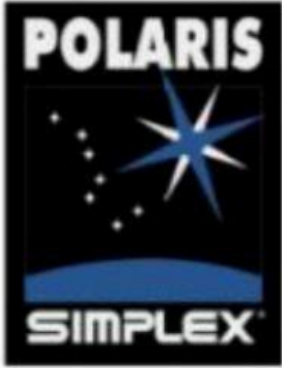
55Hz

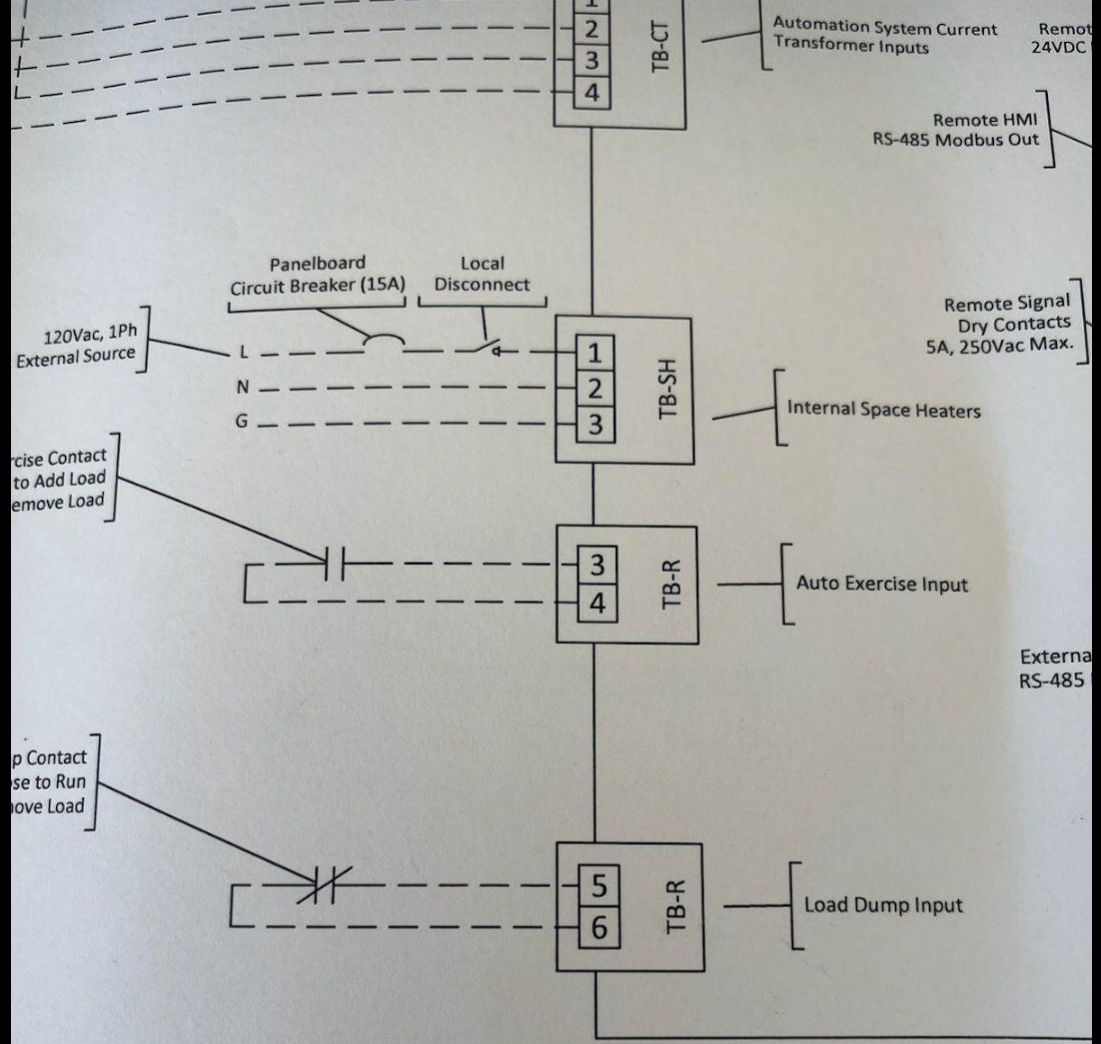
Delay

5s

Back

Exit





**Installation Notes**

1. Generator neutral must be connected to earth ground and
2. Provide external circuit protection for dry contacts as show
3. Field installed wiring must be rated 600V, 60C or higher fo  
100A. Use copper conductors only. Size conductors in acc  
being the minimum required gauge for any field connection
4. See NEC Table 310.15 for allowable ampacities of cables  
temperature.
5. Omit "C" connection and wiring for single phase units

**-PHASE, 60HZ**